



[Go to Product page](#)

Datasheet for ABIN135295  
**anti-Ly6C antibody (Biotin)**

1 Image

### Overview

Quantity:	0.5 mg
Target:	Ly6C (Ly-6C)
Reactivity:	Mouse
Host:	Rat
Clonality:	Monoclonal
Conjugate:	This Ly6C antibody is conjugated to Biotin
Application:	Flow Cytometry (FACS)

### Product Details

Immunogen:	L3 cloned CTL cells
Clone:	HK1-4
Isotype:	IgG2c
Specificity:	Mouse Ly-6C, Mr 14-17 kDa
Characteristics:	Rat Anti-Mouse Ly-6C-BIOT

### Target Details

Target:	Ly6C (Ly-6C)
Alternative Name:	Ly-6C ( <a href="#">Ly-6C Products</a> )
Background:	Ly-6C is a member of the Ly-6 multigene family of type V glycosphosphatidylinositol-anchored cell surface proteins. It is expressed on bone marrow cells, monocytes/macrophages,

## Target Details

---

neutrophils, endothelial cells, and T-cell subsets. Mice with the Ly-6.2 allotype (e.g., AKR, C57BL, C57BR, C57L, DBA/2, PL, SJL, SWR, 129) have subsets of CD4+Ly-6C+ and CD8+Ly-6C+ cells, while Ly-6.1 strains (e.g., A, BALB/c, CBA, C3H/He, DBA/1, NZB) have only CD8+Ly-6C+ lymphocytes. Ly-6C may play a role in the development and maturation of lymphocytes.

## Application Details

---

Application Notes:

- **Applications:** FC - Quality tested , IHC-FS - Reported in literature , Activ - Reported in literature
- **Working Dilutions:** Flow Cytometry Purified (UNLB) antibody 1 g/106 cells FITC, BIOT, and AF488 conjugates 1 g/106 cells PACBLU conjugate 0.3 g/106 cells PE conjugate 0.2 g/106 cells AF647 and AF700 conjugates 0.1 g/106 cells For flow cytometry, the suggested use of these reagents is in a final volume of 100 L

Comment: In vitro activation of T lymphocytes

Sample Volume: 1 mL

Restrictions: For Research Use only

## Handling

---

Concentration: 0.5 mg/mL

Buffer: 0.5 mg in 1.0 mL of PBS/Sodium azide

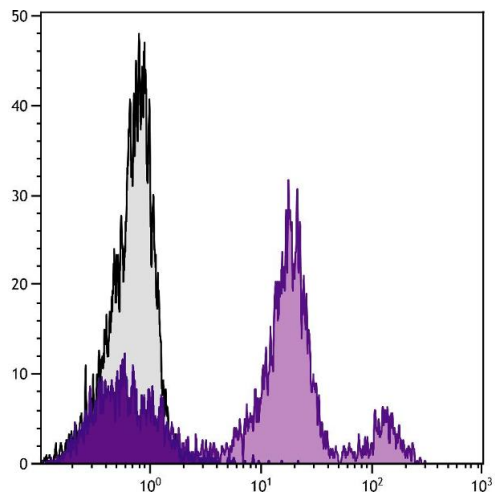
Preservative: Sodium azide

Precaution of Use: This product contains Sodium azide: a POISONOUS AND HAZARDOUS SUBSTANCE which should be handled by trained staff only.

Handling Advice: **Protect conjugated products from light.**  
Each reagent is stable for the period shown on the bottle label if stored as directed.

Storage: 4 °C

Storage Comment: Store at 2-8°C



### Flow Cytometry

**Image 1.** BALB/c mouse bone marrow cells were stained with Rat Anti-Mouse Ly-6C-BIOT.