

Datasheet for ABIN1352953

EPHX2 Protein (AA 1-555) (GST tag)



[Go to Product page](#)

1 Image

Overview

Quantity:	10 µg
Target:	EPHX2
Protein Characteristics:	AA 1-555
Origin:	Human
Source:	Wheat germ
Protein Type:	Recombinant
Purification tag / Conjugate:	This EPHX2 protein is labelled with GST tag.
Application:	ELISA, Western Blotting (WB), Antibody Array (AA), Affinity Purification (AP)

Product Details

Purpose:	EPHX2 (Human) Recombinant Protein (P01)
Sequence:	<p>MTLRAAVFDL DGVLALPAVF GVLGRTEEAL ALPRGLLND A FQKGGPEGAT TRLMKGEITL SQWIPLMEEN CRKCSETAKV CLPKNFSIKE IFDKAISARK INRPMLQAAL MLRKKGFTTA ILTNTWLDDR AERDGLAQLM CELKMHFDL IESCQVGMVK PEPQIYKFL DTLKASPSEV VFLDDIGANL KPARDLGMVT ILVQD TD TAL KELEKVTGIQ LLNTPAPLPT SCNPSDMSHG YVTVKPRVRL HFVELGSGPA VCLCHGFPES WYSWRYQIPA LAQAGYRVLA MDMKGYGESS APPEIEEYCM EVLCKEMVTF LDKLGLSQAV FIGHDWGGML VWYMA LFYPERVRAVASLNT PFIPANPNMS PLESIKANPV FDYQLYFQEP GVAEAELEQN LSRTFKSLFR ASDESVL SMH KVCEAGGLFV NSPEEPSLSR MVTEEEIQFY VQQFKKSGFR GPLNWYRNME RNWKWACKSL GRKILIPALM VTAEKDFVLV PQMSQHMEDW IPHLKRGHIE DCGHWTQMDK PTEVNQILIK WLDS DARNPP VVSKM</p>
Characteristics:	Human EPHX2 full-length ORF (NP_001970.2, 1 a.a. - 555 a.a.) recombinant protein with GST-

Product Details

tag at N-terminal.

Purification: in vitro wheat germ expression system

Target Details

Target: EPHX2

Alternative Name: EPHX2 ([EPHX2 Products](#))

Background: Full Gene Name: epoxide hydrolase 2, cytoplasmic
Synonyms: CEH,SEH

Gene ID: 2053

NCBI Accession: [NM_001979](#)

Application Details

Application Notes: Optimal working dilution should be determined by the investigator.

Comment: Preparation method: in vitro, wheat germ expression system
Product Quality tested by: 12.5% SDS-PAGE Stained with Coomassie Blue.

Restrictions: For Research Use only

Handling

Buffer: 50 mM Tris-HCl, 10 mM reduced Glutathione, pH =8.0 in the elution buffer.

Handling Advice: Aliquot to avoid repeated freezing and thawing.

Storage: -80 °C

Storage Comment: Best use within three months from the date of receipt of this protein.

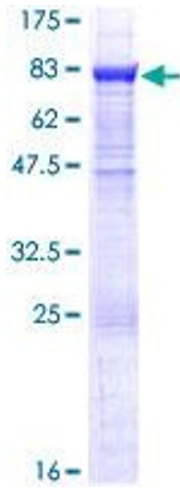


Image 1.