

Datasheet for ABIN1352965

Epsin 1 Protein (EPN1) (AA 1-550) (GST tag)



[Go to Product page](#)

1 Image

Overview

Quantity:	10 µg
Target:	Epsin 1 (EPN1)
Protein Characteristics:	AA 1-550
Origin:	Human
Source:	Wheat germ
Protein Type:	Recombinant
Purification tag / Conjugate:	This Epsin 1 protein is labelled with GST tag.
Application:	Western Blotting (WB), ELISA, Antibody Array (AA), Affinity Purification (AP)

Product Details

Purpose:	EPN1 (Human) Recombinant Protein (P01)
Sequence:	MSTSSLRRQM KNIVHNYSEA EIKVREATSN DPWGPSSSLM SEIADLTYNV VAFSEIMSMI WKRLNDHGKN WRHVYKAMTL MEYLIKTGSE RVSQQCKENM YAVQTLKDFQ YVDRDGKDQG VNVREKAKQL VALLRDEDRL REERAHAKT KEKLAQTATA SSAAVGSGPP PEAEQAWPQS SGEEELQLQL ALAMSKEEAD QEERIRRGDD LRLQMAIEES KRETGGKEES SLMDLADVFT APAPAPTTDP WGGPAPMAAA VPTAAPTSDP WGGPPVPPAA DPWGGPAPT ASGDPWRPAA PAGPSVDPWG GTPAPAAGEG PTPDPWGSSD GGVPVSGPSA SDPWTPAPAF SDPWGGSPAK PSTNGTTAGG FDTEPDEFSD FDRLRTALPT SGSSAGELEL LAGEVPARSP GAFDMSGVRG SLAEAVGSPP PAATPTPTTP TRKTPESFLG PNAALVDLDS LVSRPGPTTP GAKASNPFLP GGPATGPSV TNPFPAPPA TLTLNQLRLS PVPPVPGAPP TYISPLGGGP GLPPMMPPGP PAPNTNPFL
Characteristics:	Human EPN1 full-length ORF (NP_037465.2, 1 a.a. - 550 a.a.) recombinant protein with GST-tag

Product Details

at N-terminal.

Purification: in vitro wheat germ expression system

Target Details

Target: Epsin 1 (EPN1)

Alternative Name: EPN1 ([EPN1 Products](#))

Background: Full Gene Name: epsin 1
Synonyms:

Gene ID: 29924

NCBI Accession: [NM_013333](#)

Pathways: [EGFR Signaling Pathway](#), [EGFR Downregulation](#)

Application Details

Application Notes: Optimal working dilution should be determined by the investigator.

Comment: Preparation method: in vitro, wheat germ expression system
Product Quality tested by: 12.5% SDS-PAGE Stained with Coomassie Blue.

Restrictions: For Research Use only

Handling

Buffer: 50 mM Tris-HCl, 10 mM reduced Glutathione, pH =8.0 in the elution buffer.

Handling Advice: Aliquot to avoid repeated freezing and thawing.

Storage: -80 °C

Storage Comment: Best use within three months from the date of receipt of this protein.

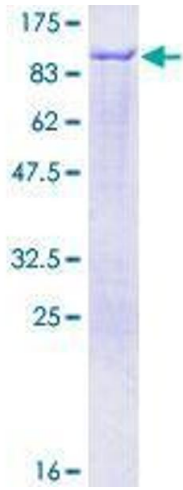


Image 1.