

Datasheet for ABIN1352967

Epsin 1 Protein (EPN1) (AA 346-428) (GST tag)



[Go to Product page](#)

1 Image

Overview

Quantity:	10 µg
Target:	Epsin 1 (EPN1)
Protein Characteristics:	AA 346-428
Origin:	Human
Source:	Wheat germ
Protein Type:	Recombinant
Purification tag / Conjugate:	This Epsin 1 protein is labelled with GST tag.
Application:	Western Blotting (WB), ELISA, Antibody Array (AA), Affinity Purification (AP)

Product Details

Purpose:	EPN1 (Human) Recombinant Protein (Q01)
Sequence:	PAPAFSDPWG GSPAKPSTNG TTAGGFDTEP DEFSDFDRLR TALPTSGSSA GELELLAGEV PARSPGAFDM SGVRGSLAEA VGS
Characteristics:	Human EPN1 partial ORF (NP_037465.2, 346 a.a. - 428 a.a.) recombinant protein with GST-tag at N-terminal.
Purification:	in vitro wheat germ expression system

Target Details

Target:	Epsin 1 (EPN1)
Alternative Name:	EPN1 (EPN1 Products)

Target Details

Background:	Full Gene Name: epsin 1 Synonyms:
Gene ID:	29924
NCBI Accession:	NM_013333
Pathways:	EGFR Signaling Pathway , EGFR Downregulation

Application Details

Application Notes:	Optimal working dilution should be determined by the investigator.
Comment:	Preparation method: in vitro, wheat germ expression system Product Quality tested by: 12.5% SDS-PAGE Stained with Coomassie Blue.
Restrictions:	For Research Use only

Handling

Buffer:	50 mM Tris-HCl, 10 mM reduced Glutathione, pH =8.0 in the elution buffer.
Handling Advice:	Aliquot to avoid repeated freezing and thawing.
Storage:	-80 °C
Storage Comment:	Best use within three months from the date of receipt of this protein.

Images

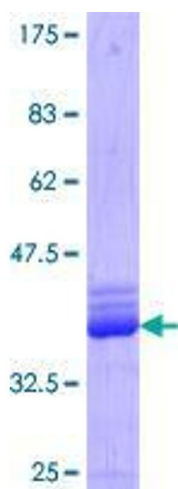


Image 1.