



[Go to Product page](#)

Datasheet for ABIN1353013  
**ErbB2/Her2 Protein (AA 22-121) (GST tag)**

1 Image

Overview

Quantity:	10 µg
Target:	ErbB2/Her2
Protein Characteristics:	AA 22-121
Origin:	Human
Source:	Wheat germ
Protein Type:	Recombinant
Purification tag / Conjugate:	This ErbB2/Her2 protein is labelled with GST tag.
Application:	Western Blotting (WB), ELISA, Antibody Array (AA), Affinity Purification (AP)

Product Details

Purpose:	ERBB2 (Human) Recombinant Protein (Q01)
Sequence:	STQVCTGTDM KLRLPASPET HLDMLRHLYQ GCQVQGNLE LTYLPTNASL SFLQDIQEVQ GYVLIAHNQV RQVPLQLRLRI VRGTQLFEDN YALAVLDNGD
Characteristics:	Human ERBB2 partial ORF ( NP_004439, 22 a.a. - 121 a.a.) recombinant protein with GST-tag at N-terminal.
Purification:	in vitro wheat germ expression system

Target Details

Target:	ErbB2/Her2
Alternative Name:	ERBB2 ( <a href="#">ErbB2/Her2 Products</a> )

## Target Details

Background:	Full Gene Name: v-erb-b2 erythroblastic leukemia viral oncogene homolog 2, neuro/glioblastoma derived oncogene homolog (avian) Synonyms: CD340,HER-2,HER-2/neu,HER2,NEU,NGL,TKR1
Gene ID:	2064
NCBI Accession:	<a href="#">NM_004448</a>
Pathways:	<a href="#">RTK Signaling</a> , <a href="#">Fc-epsilon Receptor Signaling Pathway</a> , <a href="#">EGFR Signaling Pathway</a> , <a href="#">Neurotrophin Signaling Pathway</a> , <a href="#">Skeletal Muscle Fiber Development</a>

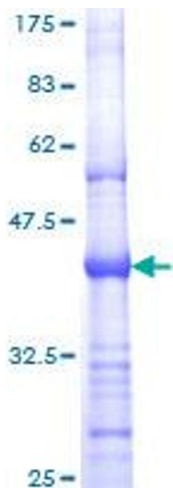
## Application Details

Application Notes:	Optimal working dilution should be determined by the investigator.
Comment:	Preparation method: in vitro, wheat germ expression system Product Quality tested by: 12.5% SDS-PAGE Stained with Coomassie Blue.
Restrictions:	For Research Use only

## Handling

Buffer:	50 mM Tris-HCl, 10 mM reduced Glutathione, pH =8.0 in the elution buffer.
Handling Advice:	Aliquot to avoid repeated freezing and thawing.
Storage:	-80 °C
Storage Comment:	Best use within three months from the date of receipt of this protein.

## Images



**Image 1.**