



Datasheet for ABIN1353041

ERCC6L Protein (AA 1-419) (GST tag)



[Go to Product page](#)

1 Image

Overview

Quantity:	10 µg
Target:	ERCC6L
Protein Characteristics:	AA 1-419
Origin:	Human
Source:	Wheat germ
Protein Type:	Recombinant
Purification tag / Conjugate:	This ERCC6L protein is labelled with GST tag.
Application:	ELISA, Western Blotting (WB), Antibody Array (AA), Affinity Purification (AP)

Product Details

Purpose:	ERCC6L (Human) Recombinant Protein (P01)
Sequence:	MEKSFATKNE AVQKETLQEG PKQEALQEDP LESFNYVLSK STKADIGPNL DQLKDDEILR HCNPWPIISI TNESQNAESN VSIIEIADDL SASHSALQDA QASEAKLEEE PSASSPQYAC DFNFLLEDSA DNRQNFSSQS LEHVEKENSL CGSAPNSRAG FVHSKTCLSW EFSEKDDPEPE EVVVKAKIRS KARRIVSDGE DEDDSFKDTS SINPFNTSLF QFSSVKQFDA STPKNDISPP GRFFSSQIPS SVNKSMNSRR SLASRRSLIN MVLDHVEDME ERLDDSSEAK GPEDYPEEGV EESSEASKY TEEDPSGETL SSENKSSWLM TSKPSALAQE TSLGAPEPLS GEQLVGSPQD KAAEATNDYE TLVKGKELK ECGKIQEALN CLVKALDIKS ADPEVMLLTL SLYKQLNNN
Characteristics:	Human ERCC6L full-length ORF (AAH08808, 1 a.a. - 419 a.a.) recombinant protein with GST-tag at N-terminal.
Purification:	in vitro wheat germ expression system

Target Details

Target:	ERCC6L
Alternative Name:	ERCC6L (ERCC6L Products)
Background:	Full Gene Name: excision repair cross-complementing rodent repair deficiency, complementation group 6-like Synonyms: FLJ20105,MGC131695,PICH
Gene ID:	54821

Application Details

Application Notes:	Optimal working dilution should be determined by the investigator.
Comment:	Preparation method: in vitro, wheat germ expression system Product Quality tested by: 12.5% SDS-PAGE Stained with Coomassie Blue.
Restrictions:	For Research Use only

Handling

Buffer:	50 mM Tris-HCl, 10 mM reduced Glutathione, pH =8.0 in the elution buffer.
Handling Advice:	Aliquot to avoid repeated freezing and thawing.
Storage:	-80 °C
Storage Comment:	Best use within three months from the date of receipt of this protein.

Images

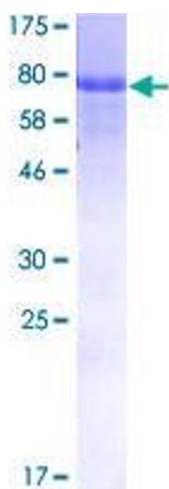


Image 1.