



[Go to Product page](#)

Datasheet for ABIN1353045
ERCC8 Protein (AA 1-396) (GST tag)

1 Image

Overview

Quantity:	10 µg
Target:	ERCC8
Protein Characteristics:	AA 1-396
Origin:	Human
Source:	Wheat germ
Protein Type:	Recombinant
Purification tag / Conjugate:	This ERCC8 protein is labelled with GST tag.
Application:	ELISA, Western Blotting (WB), Antibody Array (AA), Affinity Purification (AP)

Product Details

Purpose:	ERCC8 (Human) Recombinant Protein (P02)
Sequence:	MLGFLSARQT GLEDPLRLRR AESTRRVLGL ELNKDRDVER IHGGGINTLD IEPVEGRYML SGGSDGVIVL YDLENSRQS YYTCKAVCSI GRDHPDVHRY SVETVQWYPH DTGMFTSSSF DKTLKVWDTN TLQTADVFNF EETVYSHHMS PVSTKHCLVA VGTRGPKVQL CDLKSQSCSH ILQGHRQEIL AVSWSPRYDY ILATASADSR VKLWDVRRAS GCLITLDQHN GKKSQAVESA NTAHNGKVNG LCFTSDGLHL LTVGTDNRMR LWNSSNGENT LVNYGKVCNN SKKGLKFTVS CGCSSEFVVFV PYGSTIAVYT VYSGEQITML KGHYKTVGCC VFQSNFQELY SGRDCNILA WVPSLYEVPV DDETTTKSQ LNPAFEDAWS SSDEEG
Characteristics:	Human ERCC8 full-length ORF (NP_000073.1, 1 a.a. - 396 a.a.) recombinant protein with GST-tag at N-terminal.
Purification:	in vitro wheat germ expression system

Target Details

Target:	ERCC8
Alternative Name:	ERCC8 (ERCC8 Products)
Background:	Full Gene Name: excision repair cross-complementing rodent repair deficiency, complementation group 8 Synonyms: CKN1,CSA
Gene ID:	1161
NCBI Accession:	NM_000082
Pathways:	DNA Damage Repair , Positive Regulation of Response to DNA Damage Stimulus

Application Details

Application Notes:	Optimal working dilution should be determined by the investigator.
Comment:	Preparation method: in vitro, wheat germ expression system Product Quality tested by: 12.5% SDS-PAGE Stained with Coomassie Blue.
Restrictions:	For Research Use only

Handling

Buffer:	50 mM Tris-HCl, 10 mM reduced Glutathione, pH =8.0 in the elution buffer.
Handling Advice:	Aliquot to avoid repeated freezing and thawing.
Storage:	-80 °C
Storage Comment:	Best use within three months from the date of receipt of this protein.

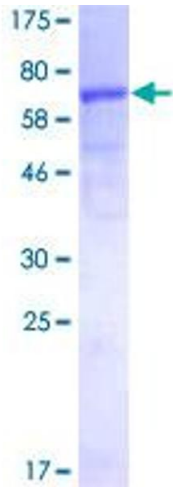


Image 1.