



[Go to Product page](#)

Datasheet for ABIN1353049

Epiregulin Protein (EREG) (AA 32-117) (GST tag)

1 Image

Overview

Quantity:	10 µg
Target:	Epiregulin (EREG)
Protein Characteristics:	AA 32-117
Origin:	Human
Source:	Wheat germ
Protein Type:	Recombinant
Purification tag / Conjugate:	This Epiregulin protein is labelled with GST tag.
Application:	Western Blotting (WB), ELISA, Antibody Array (AA), Affinity Purification (AP)

Product Details

Purpose:	EREG (Human) Recombinant Protein (Q01)
Sequence:	STTVIPSCIP GESSDNCTAL VQTEDNPRVA QVSITKCSSD MNGYCLHGQC IYLVDM SQNY CRCEVGYTGV RCEHFFLT VH QPLSKE
Characteristics:	Human EREG partial ORF (NP_001423, 32 a.a. - 117 a.a.) recombinant protein with GST-tag at N-terminal.
Purification:	in vitro wheat germ expression system

Target Details

Target:	Epiregulin (EREG)
Alternative Name:	EREG (EREG Products)

Target Details

Background:	Full Gene Name: epiregulin Synonyms: ER
Gene ID:	2069
NCBI Accession:	NM_001432
Pathways:	RTK Signaling , Fc-epsilon Receptor Signaling Pathway , EGFR Signaling Pathway , Neurotrophin Signaling Pathway , Regulation of Muscle Cell Differentiation

Application Details

Application Notes:	Optimal working dilution should be determined by the investigator.
Comment:	Preparation method: in vitro, wheat germ expression system Product Quality tested by: 12.5% SDS-PAGE Stained with Coomassie Blue.
Restrictions:	For Research Use only

Handling

Buffer:	50 mM Tris-HCl, 10 mM reduced Glutathione, pH =8.0 in the elution buffer.
Handling Advice:	Aliquot to avoid repeated freezing and thawing.
Storage:	-80 °C
Storage Comment:	Best use within three months from the date of receipt of this protein.

Images

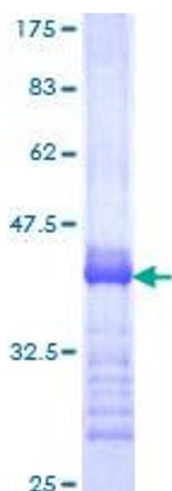


Image 1.