



Datasheet for ABIN1353051
ERF Protein (AA 1-548) (GST tag)



[Go to Product page](#)

1 Image

Overview

Quantity:	25 µg
Target:	ERF
Protein Characteristics:	AA 1-548
Origin:	Human
Source:	Wheat germ
Protein Type:	Recombinant
Purification tag / Conjugate:	This ERF protein is labelled with GST tag.
Application:	ELISA, Western Blotting (WB), Antibody Array (AA), Affinity Purification (AP)

Product Details

Purpose:	ERF (Human) Recombinant Protein (P01)
Sequence:	MKTPADTGFA FPDWAYKPES SPGSRQQLW HFILELLRKE EYQGVIAWQG DYGEFVIKDP DEVARLWGVR KCKPQMNYDK LSRALRYYYN KRILHKTKGK RFTYKFNFNK LVLVNYPFID VGLAGGAVPQ SAPPVPSGGS HFRFPPSTPS EVLSPTEDPR SPPACSSSSS SLFSAVVARR LGRGSVSDCS DGTSELEEPL GEDPRARPPG PPDLGAFRGP PLARLPHDPG VFRVYPRPRG GPEPLSPFPV SPLAGPGSLL PPQLSPALPM TPTHLAYTPS PTLSPMYPSG GGGPSGSGGG SHFSFSPEDM KRYLQAHTQS VYNYHLSPPRA FLHYPLVVP QPQRPKCPL PPMAPETPPV PSSASSSSSS SSSPFKFKLQ PPPLGRRQRA AGEKAVAGAD KSGGSAGGLA EGAGALAPPP PPPQIKVEPI SEGESEEVEV TDISDEDEED GEVFKTPRAP PAPPKPEPGE APGASQCMPL KLRFKRRWSE DCRLEGGGGP AGGFEDEGED KKVREGGPGE AGGPLTPRRV SSDLQHATAQ LSLEHRDS
Characteristics:	Human ERF full-length ORF (AAH22231.1, 1 a.a. - 548 a.a.) recombinant protein with GST-tag

Product Details

at N-terminal.

Purification: in vitro wheat germ expression system

Target Details

Target: ERF

Alternative Name: ERF ([ERF Products](#))

Background: Full Gene Name: Ets2 repressor factor
Synonyms: PE-2,PE2

Gene ID: 2077

Application Details

Application Notes: Optimal working dilution should be determined by the investigator.

Comment: Preparation method: in vitro, wheat germ expression system
Product Quality tested by: 12.5% SDS-PAGE Stained with Coomassie Blue.

Restrictions: For Research Use only

Handling

Buffer: 50 mM Tris-HCl, 10 mM reduced Glutathione, pH =8.0 in the elution buffer.

Handling Advice: Aliquot to avoid repeated freezing and thawing.

Storage: -80 °C

Storage Comment: Best use within three months from the date of receipt of this protein.

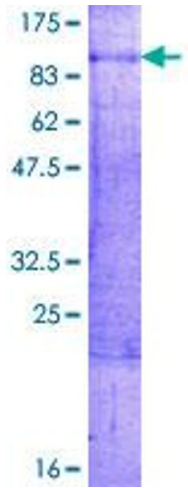


Image 1.