



[Go to Product page](#)

Datasheet for ABIN1353058
ERGIC1 Protein (AA 1-290) (GST tag)

1 Image

Overview

Quantity:	10 µg
Target:	ERGIC1
Protein Characteristics:	AA 1-290
Origin:	Human
Source:	Wheat germ
Protein Type:	Recombinant
Purification tag / Conjugate:	This ERGIC1 protein is labelled with GST tag.
Application:	ELISA, Western Blotting (WB), Antibody Array (AA), Affinity Purification (AP)

Product Details

Purpose:	ERGIC1 (Human) Recombinant Protein (P01)
Sequence:	MPPDFRRFDI YRKVPKDLTQ PTYTGAIISI CCCLFILFLF LSELTGFITT EVVNELYVDD PDKDSGGKID VSLNISLPNL HCELVGLDIQ DEMGRHEVGH IDNSMKIPLN NGAGCRFEGQ FSINKVPGNF HVSTHSATAQ PQNPDMTHVI HKLSFGDTLQ VQNIHGAFNA LGGADRLTSN PLASHDYILK IVPTVYEDKS GKQRYSYQYT VANKEYVAYS HTGRIIPAIW FRYDLSPITV KYTERRQLY RFITTICAI GGTFTVAGIL DSCIFTASEA WKKIQLGKMH
Characteristics:	Human ERGIC1 full-length ORF (NP_001026881.1, 1 a.a. - 290 a.a.) recombinant protein with GST-tag at N-terminal.
Purification:	in vitro wheat germ expression system

Target Details

Target:	ERGIC1
Alternative Name:	ERGIC1 (ERGIC1 Products)
Background:	Full Gene Name: endoplasmic reticulum-golgi intermediate compartment (ERGIC) 1 Synonyms: ERGIC-32,ERGIC32,FLJ39864,KIAA1181,MGC14345
Gene ID:	57222
NCBI Accession:	NM_001031711
Pathways:	SARS-CoV-2 Protein Interactome

Application Details

Application Notes:	Optimal working dilution should be determined by the investigator.
Comment:	Preparation method: in vitro, wheat germ expression system Product Quality tested by: 12.5% SDS-PAGE Stained with Coomassie Blue.
Restrictions:	For Research Use only

Handling

Buffer:	50 mM Tris-HCl, 10 mM reduced Glutathione, pH =8.0 in the elution buffer.
Handling Advice:	Aliquot to avoid repeated freezing and thawing.
Storage:	-80 °C
Storage Comment:	Best use within three months from the date of receipt of this protein.

Images

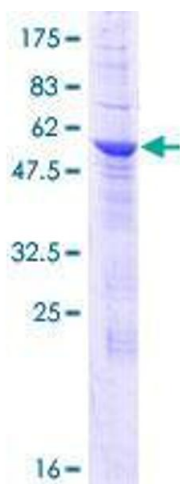


Image 1.