



[Go to Product page](#)

Datasheet for ABIN1353066

ERI1 Protein (AA 1-349) (GST tag)

1 Image

Overview

Quantity:	10 µg
Target:	ERI1
Protein Characteristics:	AA 1-349
Origin:	Human
Source:	Wheat germ
Protein Type:	Recombinant
Purification tag / Conjugate:	This ERI1 protein is labelled with GST tag.
Application:	Western Blotting (WB), ELISA, Antibody Array (AA), Affinity Purification (AP)

Product Details

Purpose:	THEX1 (Human) Recombinant Protein (P01)
Sequence:	MEDPQSKEPA GEVALALLE SPRPEGGEEP PRPSPEETQQ CKFDGQETKG SKFITSSASD FSDPVYKEIA ITNGCINRMS KEELRAKLSE FKLETRGVKD VLKKRLKNYY KKQKLMLKES NFADSYDYI CIIDFEATCE EGNPPEFVHE IIEFPVLLN THTLEIEDTF QQYVRPEINT QLSDFCISLT GITQDQVDRA DTFPQVLKKV IDWMKLELG TKYKYSLLTD GSWDMSKFLN IQCQLSRLKY PPFAKKWINI RKSYGNYFYKV PRSQTCLTIM LEKLGMDYDG RPHCGLDDSK NIARIAVRML QDGCELRINE KMHAGQLMSV SSSLPIEGTP PPQMPHFRK
Characteristics:	Human THEX1 full-length ORF (NP_699163.2, 1 a.a. - 349 a.a.) recombinant protein with GST-tag at N-terminal.
Purification:	in vitro wheat germ expression system

Target Details

Target:	ERI1
Alternative Name:	ERI1 (ERI1 Products)
Background:	Full Gene Name: exoribonuclease 1 Synonyms: 3'HEX0,MGC35395,THEX1
Gene ID:	90459
NCBI Accession:	NM_153332

Application Details

Application Notes:	Optimal working dilution should be determined by the investigator.
Comment:	Preparation method: in vitro, wheat germ expression system Product Quality tested by: 12.5% SDS-PAGE Stained with Coomassie Blue.
Restrictions:	For Research Use only

Handling

Buffer:	50 mM Tris-HCl, 10 mM reduced Glutathione, pH =8.0 in the elution buffer.
Handling Advice:	Aliquot to avoid repeated freezing and thawing.
Storage:	-80 °C
Storage Comment:	Best use within three months from the date of receipt of this protein.

Images

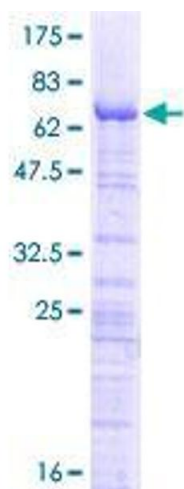


Image 1.