



[Go to Product page](#)

Datasheet for ABIN1353068

## ERI2 Protein (AA 1-328) (GST tag)

### 1 Image

#### Overview

Quantity:	25 µg
Target:	ERI2 (EXOD1)
Protein Characteristics:	AA 1-328
Origin:	Human
Source:	Wheat germ
Protein Type:	Recombinant
Purification tag / Conjugate:	This ERI2 protein is labelled with GST tag.
Application:	ELISA, Western Blotting (WB), Antibody Array (AA), Affinity Purification (AP)

#### Product Details

Purpose:	EXOD1 (Human) Recombinant Protein (P01)
Sequence:	<p>MATKRLARQL GLIRRKSIAP ANGNLGRSKS KQLFDYLIVI DFESTCWNDG KHHHSQEIIE FPAVLLNTST GQIDSEFQAY VQPQEHPILS EFCMELTGIK QAQVDEGVPL KICLSQFCKW IHKIQQQKNI IFATGISEPS ASEVKLCAFV TWSDWDLGVC LEYECKRKQL LKPVFLNSWI DLRATYKLFY RRPKPKLSGA LQEVGIEFSG REHSGLDDSR NTALLAWKMI RDGCVMKITR SLNKGPFLLP SWTWNSDLAS GDQHAFLKQE FGCPTYRTLL QKPNMSKQEK GNILWLTMVV LSLACLQRKN YNDCMLNTAS QTVTTEKF</p>
Characteristics:	Human EXOD1 full-length ORF ( NP_542394.1, 1 a.a. - 328 a.a.) recombinant protein with GST-tag at N-terminal.
Purification:	in vitro wheat germ expression system

## Target Details

Target:	ERI2 (EXOD1)
Alternative Name:	ERI2 ( <a href="#">EXOD1 Products</a> )
Background:	Full Gene Name: exoribonuclease 2 Synonyms: EXOD1,KIAA1504,MGC16943
Gene ID:	112479
NCBI Accession:	<a href="#">NM_080663</a>

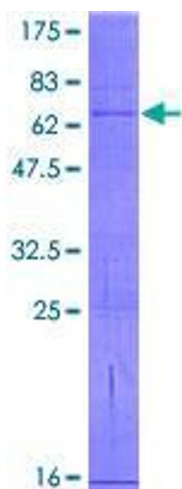
## Application Details

Application Notes:	Optimal working dilution should be determined by the investigator.
Comment:	Preparation method: in vitro, wheat germ expression system Product Quality tested by: 12.5% SDS-PAGE Stained with Coomassie Blue.
Restrictions:	For Research Use only

## Handling

Buffer:	50 mM Tris-HCl, 10 mM reduced Glutathione, pH =8.0 in the elution buffer.
Handling Advice:	Aliquot to avoid repeated freezing and thawing.
Storage:	-80 °C
Storage Comment:	Best use within three months from the date of receipt of this protein.

## Images



**Image 1.**