

Datasheet for ABIN135308
anti-TCRb antibody (FITC)



[Go to Product page](#)

1 Image

Overview

Quantity:	0.5 mg
Target:	TCRb
Reactivity:	Mouse
Host:	Hamster
Clonality:	Monoclonal
Conjugate:	This TCRb antibody is conjugated to FITC
Application:	Flow Cytometry (FACS)

Product Details

Immunogen:	TCR affinity purified from mouse T-cell hybridoma DO-11.10
Clone:	H57-597
Isotype:	IgG
Specificity:	Mouse TCR β
Characteristics:	Hamster Anti-Mouse TCRb-FITC

Target Details

Target:	TCRb
Alternative Name:	TCRb (TCRb Products)

Application Details

Application Notes:

- **Applications:** FC - Quality tested , IHC - Reported in literature , ICC - Reported in literature , IP - Reported in literature , Stim - Reported in literature , Depletion - Reported in literature , Sep - Reported in literature
- **Working Dilutions:** Flow Cytometry FITC, BIOT, and AF488 conjugates 2 g/106 cells PACBLU conjugate 0.3 g/106 cells PE, APC, SPRD, PE/CY5.5, AF647, and AF700 conjugates 0.2 g/106 cells For flow cytometry, the suggested use of these reagents is in a final volume of 100 L

Comment: In vitro stimulation of ab TCR-expressing T cells, In vitro and in vivo depletion of ab TCR-bearing cells

Sample Volume: 1 mL

Restrictions: For Research Use only

Handling

Concentration: 0.5 mg/mL

Buffer: 0.5 mg or 0.1 mg in 1.0 mL of PBS/Sodium azide

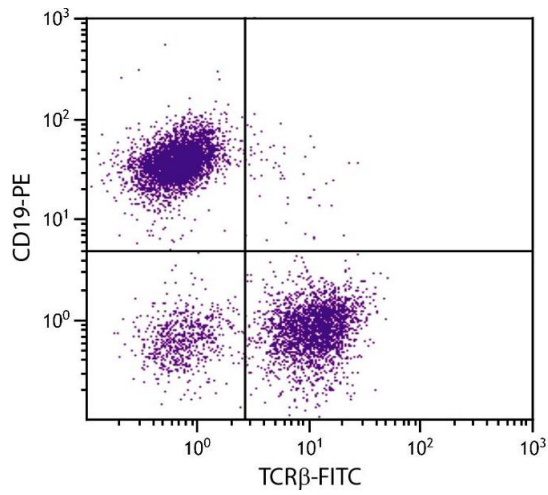
Preservative: Sodium azide

Precaution of Use: This product contains Sodium azide: a POISONOUS AND HAZARDOUS SUBSTANCE which should be handled by trained staff only.

Handling Advice: **Protect conjugated products from light.**
Each reagent is stable for the period shown on the bottle label if stored as directed.

Storage: 4 °C

Storage Comment: Store at 2-8°C



Flow Cytometry

Image 1. BALB/c mouse splenocytes were stained with Hamster Anti-Mouse TCRβ-FITC.