

Datasheet for ABIN1353090
ERO1LB Protein (AA 1-467) (GST tag)



[Go to Product page](#)

1 Image

Overview

Quantity:	10 µg
Target:	ERO1LB
Protein Characteristics:	AA 1-467
Origin:	Human
Source:	Wheat germ
Protein Type:	Recombinant
Purification tag / Conjugate:	This ERO1LB protein is labelled with GST tag.
Application:	ELISA, Western Blotting (WB), Antibody Array (AA), Affinity Purification (AP)

Product Details

Purpose:	ERO1LB (Human) Recombinant Protein (P01)
Sequence:	MSQGVRRAGA GQGVAADVQL LVTL SFLRSV VEAQVTGVLD DCLCDIDSID NFNTYKIFPK IKKLQERDYF RYYKVNLRP CPFWAEDGHC SIKDCHVEPC PESKIPVGIK AGHSNKYLKM ANNTKELEVC EQANKLGAIN STLSNQSKEA FIDWARYDDS RDHFCELDDE RSPAAQYVDL LLNPERYTG Y KGTSAWRVWN SIYEENCFKP RSVYRPLNPL APSRGEDDGE SFYTWLEGLC LEKRVFYKLI SGLHASINLH LCANYLLEET WGKPSWGPNI KEFKHRFDPV ETKGEGPRRL KNLYFLYLIE LRALSKVAPY FERSIVDLYT GNAEEDADTK TLLLNIFQDT KSFPMHFDEK SMFAGDKKGA KSLKEEFRLH FKNISRIMDC VGCDKCRLWG KLQTQGLGTA LKILFSEKEI QKLPENSPSK GFQLTRQEIV ALLNAFGRLS TSIRDLQNFK VLLQHSR
Characteristics:	Human ERO1LB full-length ORF (NP_063944.2, 1 a.a. - 467 a.a.) recombinant protein with GST-tag at N-terminal.

Product Details

Purification: in vitro wheat germ expression system

Target Details

Target: ERO1LB

Alternative Name: ERO1LB ([ERO1LB Products](#))

Background: Full Gene Name: ERO1-like beta (*S. cerevisiae*)
Synonyms:

Gene ID: 56605

NCBI Accession: [NM_019891](#)

Pathways: [SARS-CoV-2 Protein Interactome](#)

Application Details

Application Notes: Optimal working dilution should be determined by the investigator.

Comment: Preparation method: in vitro, wheat germ expression system
Product Quality tested by: 12.5% SDS-PAGE Stained with Coomassie Blue.

Restrictions: For Research Use only

Handling

Buffer: 50 mM Tris-HCl, 10 mM reduced Glutathione, pH =8.0 in the elution buffer.

Handling Advice: Aliquot to avoid repeated freezing and thawing.

Storage: -80 °C

Storage Comment: Best use within three months from the date of receipt of this protein.

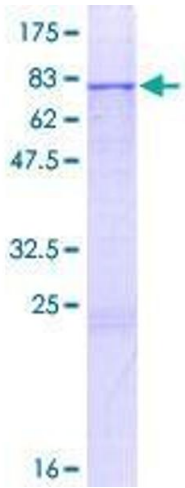


Image 1.