



[Go to Product page](#)

Datasheet for ABIN1353139

ESX Homeobox 1 Protein (ESX1) (AA 124-213) (GST tag)

1 Image

Overview

Quantity:	10 µg
Target:	ESX Homeobox 1 (ESX1)
Protein Characteristics:	AA 124-213
Origin:	Human
Source:	Wheat germ
Protein Type:	Recombinant
Purification tag / Conjugate:	This ESX Homeobox 1 protein is labelled with GST tag.
Application:	ELISA, Western Blotting (WB), Antibody Array (AA), Affinity Purification (AP)

Product Details

Purpose:	ESX1L (Human) Recombinant Protein (Q01)
Sequence:	AEGPQTAEGP QPPERKRRRR TAFTQFQLQE LENFFDESQY PDVVARERLA ARLNLTEDRV QVWFQNRRAK WKRNQRVLML RNTATADLAH
Characteristics:	Human ESX1L partial ORF (NP_703149, 124 a.a. - 213 a.a.) recombinant protein with GST-tag at N-terminal.
Purification:	in vitro wheat germ expression system

Target Details

Target:	ESX Homeobox 1 (ESX1)
Alternative Name:	ESX1 (ESX1 Products)

Target Details

Background: Full Gene Name: ESX homeobox 1
Synonyms: ESX1L,ESXR1

Gene ID: 80712

NCBI Accession: [NM_153448](#)

Application Details

Application Notes: Optimal working dilution should be determined by the investigator.

Comment: Preparation method: in vitro, wheat germ expression system
Product Quality tested by: 12.5% SDS-PAGE Stained with Coomassie Blue.

Restrictions: For Research Use only

Handling

Buffer: 50 mM Tris-HCl, 10 mM reduced Glutathione, pH =8.0 in the elution buffer.

Handling Advice: Aliquot to avoid repeated freezing and thawing.

Storage: -80 °C

Storage Comment: Best use within three months from the date of receipt of this protein.

Images

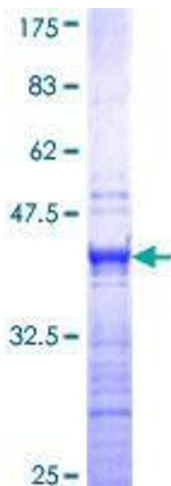


Image 1.