



[Go to Product page](#)

Datasheet for ABIN1353141

ETF1 Protein (AA 1-437) (GST tag)

1 Image

Overview

Quantity:	10 µg
Target:	ETF1
Protein Characteristics:	AA 1-437
Origin:	Human
Source:	Wheat germ
Protein Type:	Recombinant
Purification tag / Conjugate:	This ETF1 protein is labelled with GST tag.
Application:	ELISA, Western Blotting (WB), Antibody Array (AA), Affinity Purification (AP)

Product Details

Purpose:	ETF1 (Human) Recombinant Protein (P01)
Sequence:	MADDPSAADR NVEIWKIKKL IKSLEAARGN GTSMISLIIP PKDQISRVAK MLADEFGTAS NIKSRVNRLS VLGAITSVQQ RLKLYNKVPP NGLVVYCGTI VTEEGKEKKV NIDFEPFKPI NTSLYLCDNK FHTEALTALL SDDSKFGFIV IDGSGALFGT LQGNTREVLH KFTVDLPKKH GRGGQSALRF ARLRMEKRHN YVRKVAETAV QLFISGDKVN VAGLVLAGSA DFKTELSQSD MFDQRLQSKV LKLVDISYGG ENGFNQAIEL STEVLSNVKF IQEKKLIGRY FDEISQDTGK YCFGVEDTLK ALEMGA VEIL IVYENLDIMR YVLHCQGTEE EKILYLTPEQ EKDKSHFTDK ETGQEH ELIE SMPLEWFAN NYKKFGATLE IVTDKSQEGS QFVKGGFGIG GILRYRVDFQ GMEYQGGDDE FFDLDDY
Characteristics:	Human ETF1 full-length ORF (NP_004721.1, 1 a.a. - 437 a.a.) recombinant protein with GST-tag at N-terminal.

Product Details

Purification: in vitro wheat germ expression system

Target Details

Target: ETF1

Alternative Name: ETF1 ([ETF1 Products](#))

Background: Full Gene Name: eukaryotic translation termination factor 1
Synonyms: D5S1995,ERF,ERF1,MGC111066,RF1,SUP45L1,TB3-1

Gene ID: 2107

NCBI Accession: [NM_004730](#)

Application Details

Application Notes: Optimal working dilution should be determined by the investigator.

Comment: Preparation method: in vitro, wheat germ expression system
Product Quality tested by: 12.5% SDS-PAGE Stained with Coomassie Blue.

Restrictions: For Research Use only

Handling

Buffer: 50 mM Tris-HCl, 10 mM reduced Glutathione, pH =8.0 in the elution buffer.

Handling Advice: Aliquot to avoid repeated freezing and thawing.

Storage: -80 °C

Storage Comment: Best use within three months from the date of receipt of this protein.

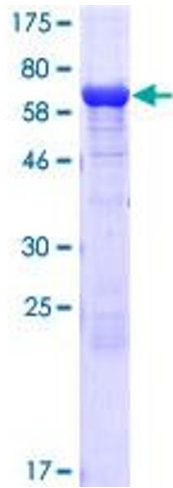


Image 1.