



[Go to Product page](#)

Datasheet for ABIN1353143

## ETF1 Protein (AA 338-437) (GST tag)

### 1 Image

#### Overview

Quantity:	10 µg
Target:	ETF1
Protein Characteristics:	AA 338-437
Origin:	Human
Source:	Wheat germ
Protein Type:	Recombinant
Purification tag / Conjugate:	This ETF1 protein is labelled with GST tag.
Application:	ELISA, Western Blotting (WB), Antibody Array (AA), Affinity Purification (AP)

#### Product Details

Purpose:	ETF1 (Human) Recombinant Protein (Q01)
Sequence:	T E E E K I L Y L T P E Q E K D K S H F T D K E T G Q E H E L I E S M P L L E W F A N N Y K K F G A T L E I V T D K S Q E G S Q F V K G F G G I G G I L R Y R V D F Q G M E Y Q G G D D E F F D L D D Y
Characteristics:	Human ETF1 partial ORF ( NP_004721.1, 338 a.a. - 437 a.a.) recombinant protein with GST-tag at N-terminal.
Purification:	in vitro wheat germ expression system

#### Target Details

Target:	ETF1
Alternative Name:	ETF1 ( <a href="#">ETF1 Products</a> )

## Target Details

Background:	Full Gene Name: eukaryotic translation termination factor 1 Synonyms: D5S1995,ERF,ERF1,MGC111066,RF1,SUP45L1,TB3-1
Gene ID:	2107
NCBI Accession:	<a href="#">NM_004730</a>

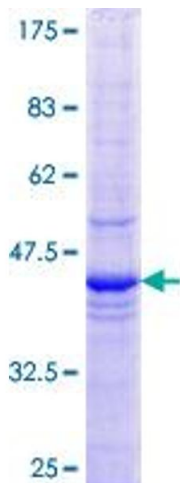
## Application Details

Application Notes:	Optimal working dilution should be determined by the investigator.
Comment:	Preparation method: in vitro, wheat germ expression system Product Quality tested by: 12.5% SDS-PAGE Stained with Coomassie Blue.
Restrictions:	For Research Use only

## Handling

Buffer:	50 mM Tris-HCl, 10 mM reduced Glutathione, pH =8.0 in the elution buffer.
Handling Advice:	Aliquot to avoid repeated freezing and thawing.
Storage:	-80 °C
Storage Comment:	Best use within three months from the date of receipt of this protein.

## Images



**Image 1.**