



[Go to Product page](#)

Datasheet for ABIN1353161

Ethanolamine Kinase 1 Protein (ETNK1) (AA 1-169) (GST tag)

1 Image

Overview

Quantity:	10 µg
Target:	Ethanolamine Kinase 1 (ETNK1)
Protein Characteristics:	AA 1-169
Origin:	Human
Source:	Wheat germ
Protein Type:	Recombinant
Purification tag / Conjugate:	This Ethanolamine Kinase 1 protein is labelled with GST tag.
Application:	ELISA, Western Blotting (WB), Antibody Array (AA), Affinity Purification (AP)

Product Details

Purpose:	ETNK1 (Human) Recombinant Protein (P01)
Sequence:	MANYIHVPPG SPEVPKLNVT VQDQEEHRCR EGALSLLQHL RPHWDPQEV T LQLFTDGITN KLIGCYVGNT MEDVVLVRIY GNKTELLVDR DEEVKSFRVL QAHGCAPQLY CTFNNGLCYE FIQGEALDPK HVCNPAIFSL SSLTLCKGKT TRCFGLTGCR GSRLLLSFF
Characteristics:	Human ETNK1 full-length ORF (AAH06111, 1 a.a. - 169 a.a.) recombinant protein with GST-tag at N-terminal.
Purification:	in vitro wheat germ expression system

Target Details

Target:	Ethanolamine Kinase 1 (ETNK1)
Alternative Name:	ETNK1 (ETNK1 Products)

Target Details

Background: Full Gene Name: ethanolamine kinase 1
Synonyms: EKI,EK11,Nbla10396

Gene ID: 55500

Application Details

Application Notes: Optimal working dilution should be determined by the investigator.

Comment: Preparation method: in vitro, wheat germ expression system
Product Quality tested by: 12.5% SDS-PAGE Stained with Coomassie Blue.

Restrictions: For Research Use only

Handling

Buffer: 50 mM Tris-HCl, 10 mM reduced Glutathione, pH =8.0 in the elution buffer.

Handling Advice: Aliquot to avoid repeated freezing and thawing.

Storage: -80 °C

Storage Comment: Best use within three months from the date of receipt of this protein.

Images

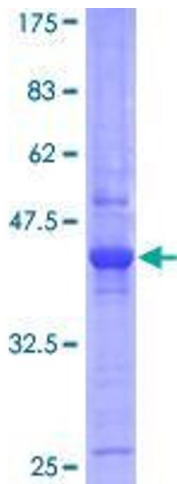


Image 1.