



[Go to Product page](#)

Datasheet for ABIN1353232

## EXOSC10 Protein (AA 1-885) (GST tag)

### 1 Image

#### Overview

Quantity:	25 µg
Target:	EXOSC10
Protein Characteristics:	AA 1-885
Origin:	Human
Source:	Wheat germ
Protein Type:	Recombinant
Purification tag / Conjugate:	This EXOSC10 protein is labelled with GST tag.
Application:	ELISA, Western Blotting (WB), Antibody Array (AA), Affinity Purification (AP)

#### Product Details

Purpose:	EXOSC10 (Human) Recombinant Protein (P01)
Sequence:	MAPPSTREPR VLSATSATKS DGEMVLPQFP DADSFVKFAL GSVVAVTKAS GGLPQFGDEY DFYRSFPGFQ AFCETQGDRL LQCMSRVMQY HGCRSNIKDR SKVTELEDKF DLLVDANDVI LERVGILLDE ASGVNKNQQP VLPAGLQVPK TVVSSWNRKA AEYGKKAKSE TFRLHAKNI IRPQLKFREK IDNSNTPFLP KIFIKPNAQK PLPQALSKER RERPQDRPED LDVPPALADF IHQRTQQVE QDMFAHPYQY ELNHFTPADA VLQKPQPQLY RPIETPCHF ISSLDELVEL NEKLLNCQEF AVDLEHHSYR SFLGLTCLMQ ISTRTEFII DTLELRSDMY ILNESLTDPA IVKVFHGADS DIEWLQKDFG LYVVMFMDTH QAARLLNLGR HSLDHLLKLY CNVDSNKQYQ LADWRIRPLP EEMLSYARDD THYLLIYDK MRLEMWERGN GQPVQLQVWV QRSRDICLKK FIKPIFTDES YLELYRKQKK HLNTQQLTAF QLLFAWRDKT ARREDESYGY VLPNHMMLKI AEELPKPEQG IIAACNPVPP LVRQQINEMH LLIQQAREMP LLKSEVAAGV KKSGLPSAE RLENVLFQPH DCSHAPPDGY PIIPTSGSVP VQKQASLFPD EKEDNLLGTT CLIATAVITL

## Product Details

---

FNEPSAEDSK KGPLTVAQKK AQNIMESFEN PFRMFLPSLG HRAPVSQAAK FDPSTKIYEI  
SNRWKLAQVQ VQKDSKEAVK KKAAEQTAAR EQAKEACKAA AEQAISVRQQ VVLENAAKKR  
ERATSDPRTT EQKQEKRLK ISKKPKDPEP PEKEFTPYDY SQSDFKAFAG NSKSKVSSQF  
DPNKQTPSGK KCIAAKKIKQ SVGNKSMSFP TGKSDRGFRY NWPQR

Characteristics: Human EXOSC10 full-length ORF ( NP\_001001998.1, 1 a.a. - 885 a.a.) recombinant protein with GST-tag at N-terminal.

Purification: in vitro wheat germ expression system

## Target Details

---

Target: EXOSC10

Alternative Name: EXOSC10 ([EXOSC10 Products](#))

Background: Full Gene Name: exosome component 10  
Synonyms: PM-ScI,PM/ScI-100,PMSC1,PMSC12,RRP6,Rrp6p,p2,p3,p4

Gene ID: 5394

NCBI Accession: [NM\\_001001998](#)

## Application Details

---

Application Notes: Optimal working dilution should be determined by the investigator.

Comment: Preparation method: in vitro, wheat germ expression system  
Product Quality tested by: 12.5% SDS-PAGE Stained with Coomassie Blue.

Restrictions: For Research Use only

## Handling

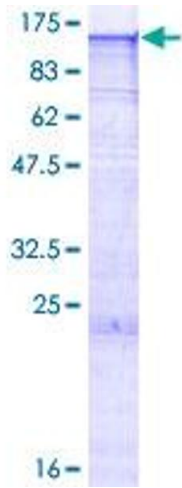
---

Buffer: 50 mM Tris-HCl, 10 mM reduced Glutathione, pH =8.0 in the elution buffer.

Handling Advice: Aliquot to avoid repeated freezing and thawing.

Storage: -80 °C

Storage Comment: Best use within three months from the date of receipt of this protein.



**Image 1.**