

Datasheet for ABIN1353235

## EXOSC2 Protein (AA 71-160) (GST tag)



[Go to Product page](#)

### 1 Image

#### Overview

Quantity:	10 µg
Target:	EXOSC2
Protein Characteristics:	AA 71-160
Origin:	Human
Source:	Wheat germ
Protein Type:	Recombinant
Purification tag / Conjugate:	This EXOSC2 protein is labelled with GST tag.
Application:	Western Blotting (WB), ELISA, Antibody Array (AA), Affinity Purification (AP)

#### Product Details

Purpose:	EXOSC2 (Human) Recombinant Protein (Q01)
Sequence:	ALKTRYIGEV GDIVVGRITE VQQRWVKVET NSRLDSVLLL SSMNLPGGEL RRRSAEDELA MRGFLQEGDL ISAEVQAVFS DGAVSLHTRS
Characteristics:	Human EXOSC2 partial ORF ( NP_055100, 71 a.a. - 160 a.a.) recombinant protein with GST-tag at N-terminal.
Purification:	in vitro wheat germ expression system

#### Target Details

Target:	EXOSC2
Alternative Name:	EXOSC2 ( <a href="#">EXOSC2 Products</a> )

## Target Details

Background: Full Gene Name: exosome component 2  
Synonyms: RRP4,Rrp4p,hRrp4p,p7

Gene ID: 23404

NCBI Accession: [NM\\_014285](#)

Pathways: [SARS-CoV-2 Protein Interactome](#)

## Application Details

Application Notes: Optimal working dilution should be determined by the investigator.

Comment: Preparation method: in vitro, wheat germ expression system  
Product Quality tested by: 12.5% SDS-PAGE Stained with Coomassie Blue.

Restrictions: For Research Use only

## Handling

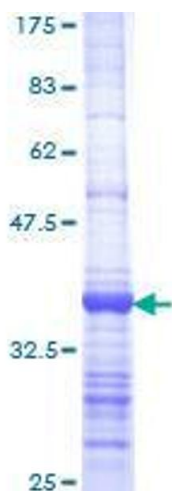
Buffer: 50 mM Tris-HCl, 10 mM reduced Glutathione, pH =8.0 in the elution buffer.

Handling Advice: Aliquot to avoid repeated freezing and thawing.

Storage: -80 °C

Storage Comment: Best use within three months from the date of receipt of this protein.

## Images



**Image 1.**