

Datasheet for ABIN135325  
**anti-CD45.2 antibody (FITC)**[Go to Product page](#)

## 2 Images

## Overview

|              |  |
|--------------|--|
| Quantity:    | 0.5 mg                                     |
| Target:      | CD45.2                                     |
| Reactivity:  | Mouse                                      |
| Host:        | Mouse                                      |
| Clonality:   | Monoclonal                                 |
| Conjugate:   | This CD45.2 antibody is conjugated to FITC |
| Application: | Flow Cytometry (FACS)                      |

## Product Details

|                  |  |
|------------------|--|
| Immunogen:       | B10.S mouse thymocytes and splenocytes |
| Clone:           | 104                                    |
| Isotype:         | IgG2a                                  |
| Specificity:     | Mouse CD45.2, Mr 180-240 kDa           |
| Characteristics: | Mouse Anti-Mouse CD45.2-FITC           |

## Target Details

|                   |  |
|-------------------|--|
| Target:           | CD45.2   |
| Alternative Name: | CD45.2 ( <a href="#">CD45.2 Products</a> )   |
| Background:       | The CD45 antigen is an essential regulator of leukocyte activation and development, and is now known to be a protein tyrosine phosphatase, e.g. CD45 is able to dephosphorylate the Src family |

## Target Details

of protein kinases. This activity is now known to be required for signal transduction induced by T and B cell antigen receptor engagement, cytokine signaling and Fc receptor stimulation. The functional state of CD45 also has a pronounced effect on lymphocyte development. CD45 exists in multiple forms, such as the restricted variants (CD45R) and as allelic forms CD45.1/Ly-5.1 and CD45.2/Ly-5.2. The specificity of antibodies to CD45.1 and CD45.2 has been exploited in studies where resolution of donor and recipient cells is essential, such as in gene therapy or bone marrow transplantation.

## Application Details

|                    |   |
|--------------------|---|
| Application Notes: | <ul style="list-style-type: none"><li>• <b>Applications:</b> FC - Quality tested , IHC-FS - Reported in literature</li><li>• <b>Working Dilutions:</b> Flow Cytometry FITC, BIOT, and AF488 conjugates 1 g/106 cells PE, APC, SPRD, CY5, PE/CY5.5, PE/CY7, APC/CY5.5, AF647, 0.3 g/106 cells AF700, and PACBLU conjugates For flow cytometry, the suggested use of these reagents is in a final volume of 100 L</li></ul> |
|--------------------|---|

|                |                       |
|----------------|-----------------------|
| Sample Volume: | 1 mL                  |
| Restrictions:  | For Research Use only |

## Handling

|                    |  |
|--------------------|--|
| Concentration:     | 0.5 mg/mL  |
| Buffer:            | 0.5 mg in 1.0 mL of PBS/Sodium azide   |
| Preservative:      | Sodium azide   |
| Precaution of Use: | This product contains Sodium azide: a POISONOUS AND HAZARDOUS SUBSTANCE which should be handled by trained staff only.                   |
| Handling Advice:   | <b>Protect conjugated products from light.</b><br>Each reagent is stable for the period shown on the bottle label if stored as directed. |
| Storage:           | 4 °C   |
| Storage Comment:   | Store at 2-8°C   |

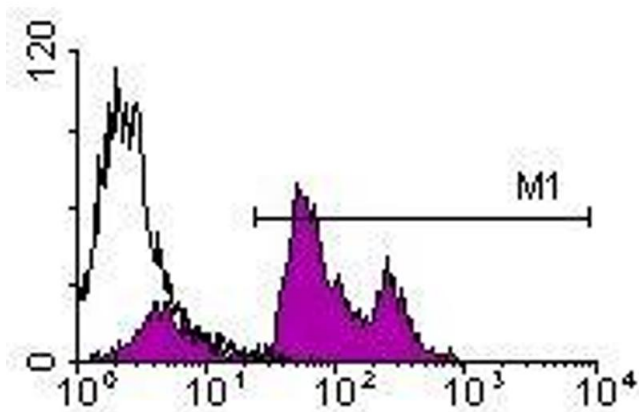
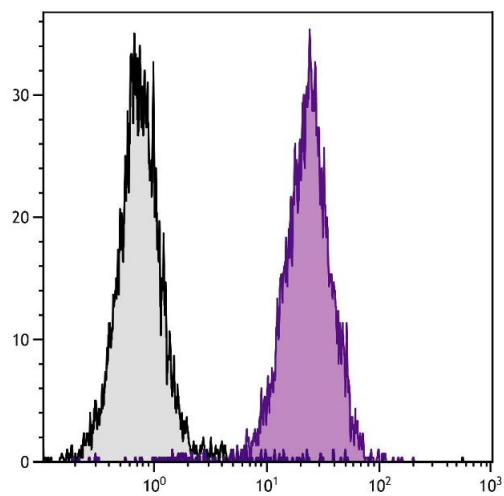


Image 1.



### Flow Cytometry

**Image 2.** C57BL/6 mouse splenocytes were stained with Mouse Anti-Mouse CD45.2-FITC.