

Datasheet for ABIN1353293

## Factor XI Protein (AA 1-625) (GST tag)



[Go to Product page](#)

### 1 Image

#### Overview

Quantity:	10 µg
Target:	Factor XI (F11)
Protein Characteristics:	AA 1-625
Origin:	Human
Source:	Wheat germ
Protein Type:	Recombinant
Purification tag / Conjugate:	This Factor XI protein is labelled with GST tag.
Application:	Western Blotting (WB), ELISA, Antibody Array (AA), Affinity Purification (AP)

#### Product Details

Purpose:	F11 (Human) Recombinant Protein (P01)
Sequence:	MIFLYQVWHF ILFTSVSGEC VTQLLKDTCF EGGDITTVFT PSAKYCQVVC TYHPRCLLFT FTAESPEDP TRWFTCVLKD SVTETLPRVN RTAAISGYSF KQCSHQISAC NKDIYVDLDM KGINYNSSVA KSAQECQERC TDDVHCHFFT YATRQFPSLE HRNICLLKHT QTGTPTRITK LDKVVSGFSL KSCALSNLAC IRDIFPNTVF ADSNIDSVMA PDAFVCGRIC THHPGCLFFT FFSQEWPKES QRNLCLLKTS ESGLPSTRIK KSKALSGFSL QSCRHSIPVF CHSSFYHDTD FLGEELDIVA AKSHEACQKL CTNAVRCQFF TYTPAQASCN EGKGKCYLKL SSNGSPTKIL HGRGGISGYT LRLCKMDNEC TTKIKPRIVG GTASVRGEWP WQVTLHTTSP TQRHLCGGSI IGNQWILTAA HCFYGVESPK ILRVYSGILN QSEIKEDTSF FGVQEIIHD QYKMAESGYD IALLKLETTV NYTDSQRPIC LPSKGDNRVI YTDCWVTGWG YRKL RDKIQN TLQKAKIPLV TNEECQKRYR GHKITHKMIC AGYREGGKDA CKGDSGGPLS CKHNEVWHLV GITSWGEGCA QRERPGVYTN VVEYVDWILE KTQAV

## Product Details

---

Characteristics:	Human F11 full-length ORF ( NP_000119.1, 1 a.a. - 625 a.a.) recombinant protein with GST-tag at N-terminal.
Purification:	in vitro wheat germ expression system

## Target Details

---

Target:	Factor XI (F11)
Alternative Name:	F11 ( <a href="#">F11 Products</a> )
Background:	Gene: coagulation factor XI Synonyms: FXI, MGC141891
Gene ID:	2160
NCBI Accession:	<a href="#">NM_000128</a>

## Application Details

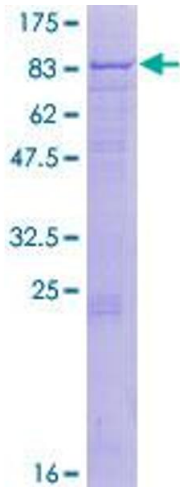
---

Application Notes:	Optimal working dilution should be determined by the investigator.
Restrictions:	For Research Use only

## Handling

---

Buffer:	50 mM Tris-HCl, 10 mM reduced Glutathione, pH =8.0 in the elution buffer.
Handling Advice:	Aliquot to avoid repeated freezing and thawing.
Storage:	-80 °C
Storage Comment:	Best use within three months from the date of receipt of this protein.



**Image 1.**