



[Go to Product page](#)

Datasheet for ABIN1353311
PAR1 Protein (AA 42-102) (GST tag)

1 Image

Overview

Quantity:	10 µg
Target:	PAR1 (F2R)
Protein Characteristics:	AA 42-102
Origin:	Human
Source:	Wheat germ
Protein Type:	Recombinant
Purification tag / Conjugate:	This PAR1 protein is labelled with GST tag.
Application:	Western Blotting (WB), ELISA, Affinity Purification (AP), Antibody Array (AA)

Product Details

Purpose:	F2R (Human) Recombinant Protein (Q01)
Sequence:	SFLLRNPNDK YEPFWEDEEK NESGLTEYRL VSINKSSPLQ KQLPAFISED ASGYLTSSWL T
Characteristics:	Human F2R partial ORF (NP_001983.1, 42 a.a. - 102 a.a.) recombinant protein with GST-tag at N-terminal.
Purification:	in vitro wheat germ expression system

Target Details

Target:	PAR1 (F2R)
Alternative Name:	F2R (F2R Products)
Background:	Full Gene Name: coagulation factor II (thrombin) receptor

Target Details

Synonyms: CF2R,HTR,PAR1,TR

Gene ID: 2149

NCBI Accession: [NM_001992](#)

Pathways: [Nuclear Receptor Transcription Pathway](#), [Skeletal Muscle Fiber Development](#), [Positive Regulation of Endopeptidase Activity](#), [Protein targeting to Nucleus](#)

Application Details

Application Notes: Optimal working dilution should be determined by the investigator.

Comment: Preparation method: in vitro, wheat germ expression system
Product Quality tested by: 12.5% SDS-PAGE Stained with Coomassie Blue.

Restrictions: For Research Use only

Handling

Buffer: 50 mM Tris-HCl, 10 mM reduced Glutathione, pH =8.0 in the elution buffer.

Handling Advice: Aliquot to avoid repeated freezing and thawing.

Storage: -80 °C

Storage Comment: Best use within three months from the date of receipt of this protein.

Images

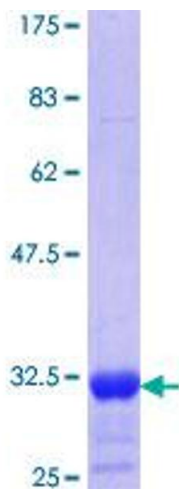


Image 1.