

Datasheet for ABIN1353316
F2RL3 Protein (AA 18-82) (GST tag)[Go to Product page](#)

1 Image

Overview

Quantity:	10 µg
Target:	F2RL3
Protein Characteristics:	AA 18-82
Origin:	Human
Source:	Wheat germ
Protein Type:	Recombinant
Purification tag / Conjugate:	This F2RL3 protein is labelled with GST tag.
Application:	Western Blotting (WB), ELISA, Antibody Array (AA), Affinity Purification (AP)

Product Details

Purpose:	F2RL3 (Human) Recombinant Protein (Q01)
Sequence:	GGTQTPSVYD ESGSTGGGDD STPSILPAPR GYPGQVCAND SDTLELPDSS RALLLGWVPT RLVPA
Characteristics:	Human F2RL3 partial ORF (NP_003941, 18 a.a. - 82 a.a.) recombinant protein with GST-tag at N-terminal.
Purification:	in vitro wheat germ expression system

Target Details

Target:	F2RL3
Alternative Name:	F2RL3 (F2RL3 Products)
Background:	Full Gene Name: coagulation factor II (thrombin) receptor-like 3

Target Details

	Synonyms: PAR4
Gene ID:	9002
NCBI Accession:	NM_003950
Pathways:	Carbohydrate Homeostasis , Regulation of Carbohydrate Metabolic Process

Application Details

Application Notes:	Optimal working dilution should be determined by the investigator.
Comment:	Preparation method: in vitro, wheat germ expression system Product Quality tested by: 12.5% SDS-PAGE Stained with Coomassie Blue.
Restrictions:	For Research Use only

Handling

Buffer:	50 mM Tris-HCl, 10 mM reduced Glutathione, pH =8.0 in the elution buffer.
Handling Advice:	Aliquot to avoid repeated freezing and thawing.
Storage:	-80 °C
Storage Comment:	Best use within three months from the date of receipt of this protein.

Images

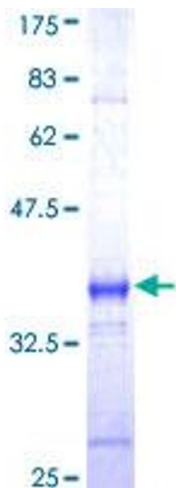


Image 1.