

Datasheet for ABIN135332

anti-Klra6 antibody[Go to Product page](#)**1** Image

Overview

Quantity:	0.5 mg
Target:	Klra6
Reactivity:	Mouse
Host:	Mouse
Clonality:	Monoclonal
Conjugate:	This Klra6 antibody is un-conjugated
Application:	Flow Cytometry (FACS)

Product Details

Immunogen:	CHO-K1 cells transfected with B6 allele of Ly49F gene
Clone:	HBF-719
Isotype:	IgG1
Specificity:	Mouse Ly-49F
Characteristics:	Mouse Anti-Mouse Ly-49F-UNLB
Purification:	Purified

Target Details

Target:	Klra6
Alternative Name:	Ly-49F (Klra6 Products)

Application Details

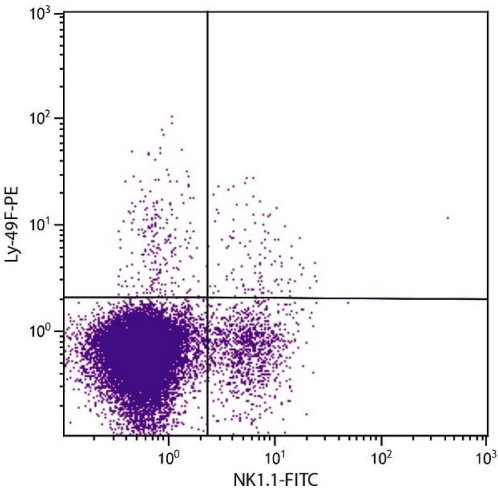
Application Notes:	<ul style="list-style-type: none">• Applications: FC - Quality tested• Working Dilutions: Flow Cytometry Purified (UNLB) antibody 1 g/106 cells FITC and BIOT conjugates 1 g/106 cells PE conjugate 0.2 g/106 cells For flow cytometry, the suggested use of these reagents is in a final volume of 100 L
--------------------	--

Sample Volume:	1 mL
Restrictions:	For Research Use only

Handling

Concentration:	0.5 mg/mL
Buffer:	0.5 mg of purified immunoglobulin in 1.0 mL of borate buffered saline, pH 8.2. No preservatives or amine-containing buffer salts added
Preservative:	Without preservative
Handling Advice:	Each reagent is stable for the period shown on the bottle label if stored as directed.
Storage:	4 °C
Storage Comment:	Store at 2-8°C

Images



Flow Cytometry

Image 1. C57BL/6 mouse splenocytes were stained with Mouse Anti-Mouse Ly-49F-PE.