

Datasheet for ABIN135334
anti-Klra6 antibody (Biotin)



[Go to Product page](#)

1 Image

Overview

Quantity:	0.5 mg
Target:	Klra6
Reactivity:	Mouse
Host:	Mouse
Clonality:	Monoclonal
Conjugate:	This Klra6 antibody is conjugated to Biotin
Application:	Flow Cytometry (FACS)

Product Details

Immunogen:	CHO-K1 cells transfected with B6 allele of Ly49F gene
Clone:	HBF-719
Isotype:	IgG1
Specificity:	Mouse Ly-49F
Characteristics:	Mouse Anti-Mouse Ly-49F-BIOT

Target Details

Target:	Klra6
Alternative Name:	Ly-49F (Klra6 Products)

Application Details

Application Notes:	<ul style="list-style-type: none">• Applications: FC - Quality tested• Working Dilutions: Flow Cytometry Purified (UNLB) antibody 1 g/106 cells FITC and BIOT conjugates 1 g/106 cells PE conjugate 0.2 g/106 cells For flow cytometry, the suggested use of these reagents is in a final volume of 100 L
--------------------	--

Sample Volume: 1 mL

Restrictions: For Research Use only

Handling

Concentration: 0.5 mg/mL

Buffer: 0.5 mg in 1.0 mL of PBS/Sodium azide

Preservative: Sodium azide

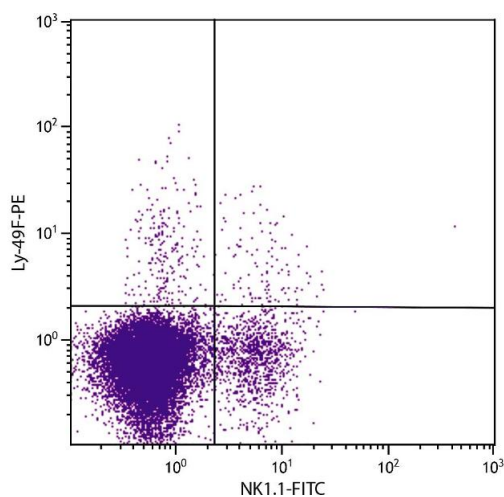
Precaution of Use: This product contains Sodium azide: a POISONOUS AND HAZARDOUS SUBSTANCE which should be handled by trained staff only.

Handling Advice: **Protect conjugated products from light.**
Each reagent is stable for the period shown on the bottle label if stored as directed.

Storage: 4 °C

Storage Comment: Store at 2-8°C

Images



Flow Cytometry

Image 1. C57BL/6 mouse splenocytes were stained with Mouse Anti-Mouse Ly-49F-PE.