

Datasheet for ABIN135335
anti-Klra6 antibody (PE)[Go to Product page](#)

1 Image

Overview

| | |
|--------------|---|
| Quantity: | 0.1 mg |
| Target: | Klra6 |
| Reactivity: | Mouse |
| Host: | Mouse |
| Clonality: | Monoclonal |
| Conjugate: | This Klra6 antibody is conjugated to PE |
| Application: | Flow Cytometry (FACS) |

Product Details

| | |
|------------------|---|
| Immunogen: | CHO-K1 cells transfected with B6 allele of Ly49F gene |
| Clone: | HBF-719 |
| Isotype: | IgG1 |
| Specificity: | Mouse Ly-49F |
| Characteristics: | Mouse Anti-Mouse Ly-49F-PE |

Target Details

| | |
|-------------------|---|
| Target: | Klra6 |
| Alternative Name: | Ly-49F (Klra6 Products) |

Application Details

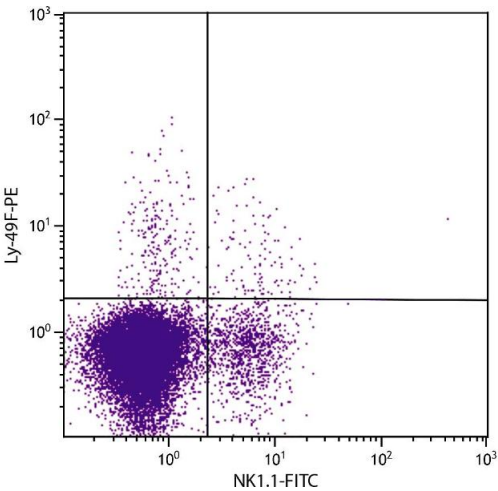
| | |
|--------------------|--|
| Application Notes: | <ul style="list-style-type: none">• Applications: FC - Quality tested• Working Dilutions: Flow Cytometry Purified (UNLB) antibody 1 g/106 cells FITC and BIOT conjugates 1 g/106 cells PE conjugate 0.2 g/106 cells For flow cytometry, the suggested use of these reagents is in a final volume of 100 L |
|--------------------|--|

| | |
|----------------|-----------------------|
| Sample Volume: | 1 mL |
| Restrictions: | For Research Use only |

Handling

| | |
|--------------------|--|
| Concentration: | 0.1 mg/mL |
| Buffer: | 0.1 mg in 1.0 mL of PBS/Sodium azide and a stabilizing agent |
| Preservative: | Sodium azide |
| Precaution of Use: | This product contains Sodium azide: a POISONOUS AND HAZARDOUS SUBSTANCE which should be handled by trained staff only. |
| Handling Advice: | <p>Do not freeze!</p> <p>Protect conjugated products from light.</p> <p>Each reagent is stable for the period shown on the bottle label if stored as directed.</p> |
| Storage: | 4 °C |
| Storage Comment: | Store at 2-8°C |

Images



Flow Cytometry

Image 1. C57BL/6 mouse splenocytes were stained with Mouse Anti-Mouse Ly-49F-PE.