

Datasheet for ABIN1353357  
**FADS1 Protein (AA 1-444) (GST tag)**



[Go to Product page](#)

1 Image

Overview

Quantity:	25 µg
Target:	FADS1
Protein Characteristics:	AA 1-444
Origin:	Human
Source:	Wheat germ
Protein Type:	Recombinant
Purification tag / Conjugate:	This FADS1 protein is labelled with GST tag.
Application:	Western Blotting (WB), ELISA, Antibody Array (AA), Affinity Purification (AP)

Product Details

Purpose:	FADS1 (Human) Recombinant Protein (P01)
Sequence:	MAPDPVAAET AAQGTPRYF TWDEVAQRSG CEERWLVIDR KVYNISEFTR RHPGGSRVIS HYAGQDATDP FVAFHINKGL VKKYMNSLLI GELSPEQPSF EPTKNKELTD EFREL RATVE RMGLMKANHV FFLYLLHIL LLDGAAWLTL WVFGTSFLPF LLCVLLSAV QAQAGWLQHD FGHLSVFSTS KWNHLLHHFV IGHKLGAPAS WWNHMHFQHH AKPNCFRKDP DINMHPFFFA LGKILSVELG KQKKKYPYN HQHKYFFLIG PSALLPLYFQ WYIFYFVIQR KKWVDLAWMI TFYVRFFLT YVPLLGLKAF LGLFFIVRFLE SNWFVWVTQM NHIPMHIDHD RNMDWVSTQL QATCNVHKSA FNDWFSGHLN FQIEHHLFPT MPRHNYHKVA PLVQSLCAKH GIEYQSKPLL SAFADIIHSL KESGQLWLDA YLHQ
Characteristics:	Human FADS1 full-length ORF ( AAH07846, 1 a.a. - 444 a.a.) recombinant protein with GST-tag at N-terminal.

## Product Details

---

Purification: in vitro wheat germ expression system

## Target Details

---

Target: FADS1

Alternative Name: FADS1 ([FADS1 Products](#))

Background: Full Gene Name: fatty acid desaturase 1  
Synonyms: D5D,FADS6,FADSD5,FLJ38956,FLJ90273,LLCDL1,TU12

Gene ID: 3992

Pathways: [Regulation of Lipid Metabolism by PPARalpha](#)

## Application Details

---

Application Notes: Optimal working dilution should be determined by the investigator.

Comment: Preparation method: in vitro, wheat germ expression system  
Product Quality tested by: 12.5% SDS-PAGE Stained with Coomassie Blue.

Restrictions: For Research Use only

## Handling

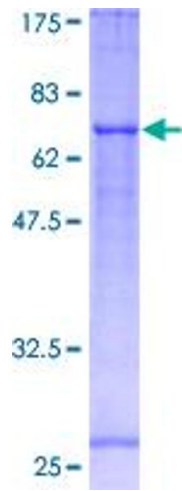
---

Buffer: 50 mM Tris-HCl, 10 mM reduced Glutathione, pH =8.0 in the elution buffer.

Handling Advice: Aliquot to avoid repeated freezing and thawing.

Storage: -80 °C

Storage Comment: Best use within three months from the date of receipt of this protein.



**Image 1.**