



[Go to Product page](#)

Datasheet for ABIN135336
anti-NKG2A/C/E antibody

1 Image

Overview

| | |
|--------------|--|
| Quantity: | 0.5 mg |
| Target: | NKG2A/C/E (KLRC1/2/3) |
| Reactivity: | Mouse |
| Host: | Rat |
| Clonality: | Monoclonal |
| Conjugate: | This NKG2A/C/E antibody is un-conjugated |
| Application: | Flow Cytometry (FACS) |

Product Details

| | |
|------------------|--|
| Immunogen: | CHO cells transfected with B6 allele of NKG2A gene |
| Clone: | 20d5 |
| Isotype: | IgG2a |
| Specificity: | Mouse NKG2-A/C/E |
| Characteristics: | Rat Anti-Mouse NKG2-A/C/E-UNLB |
| Purification: | Purified |

Target Details

| | |
|-------------------|---|
| Target: | NKG2A/C/E (KLRC1/2/3) |
| Alternative Name: | NKG2-A/C/E (KLRC1/2/3 Products) |

Application Details

- Application Notes:
- **Applications:** FC - Quality tested , Block - Reported in literature
 - **Working Dilutions:** Flow Cytometry Purified (UNLB) antibody 1 g/106 cells FITC and BIOT conjugates 1 g/106 cells PE conjugate 0.2 g/106 cells For flow cytometry, the suggested use of these reagents is in a final volume of 100 L

Sample Volume: 1 mL

Restrictions: For Research Use only

Handling

Concentration: 0.5 mg/mL

Buffer: 0.5 mg of purified immunoglobulin in 1.0 mL of borate buffered saline, pH 8.2. No preservatives or amine-containing buffer salts added

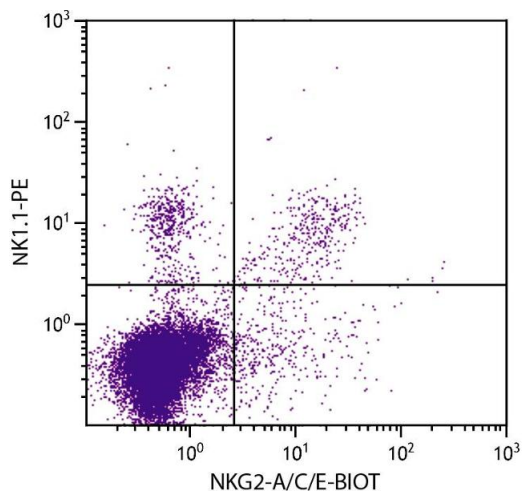
Preservative: Without preservative

Handling Advice: Each reagent is stable for the period shown on the bottle label if stored as directed.

Storage: 4 °C

Storage Comment: Store at 2-8°C

Images



Flow Cytometry

Image 1. C57BL/6 mouse splenocytes were stained with Rat Anti-Mouse NKG2-A/C/E-BIOT and Mouse Anti-Mouse NK1.1-PE.