



[Go to Product page](#)

Datasheet for ABIN135338

anti-NKG2A/C/E antibody (Biotin)

1 Image

Overview

Quantity:	0.5 mg
Target:	NKG2A/C/E (KLRC1/2/3)
Reactivity:	Mouse
Host:	Rat
Clonality:	Monoclonal
Conjugate:	This NKG2A/C/E antibody is conjugated to Biotin
Application:	Flow Cytometry (FACS)

Product Details

Immunogen:	CHO cells transfected with B6 allele of NKG2A gene
Clone:	20d5
Isotype:	IgG2a
Specificity:	Mouse NKG2-A/C/E
Characteristics:	Rat Anti-Mouse NKG2-A/C/E-BIOT
Purification:	The antibody was affinity-purified from rabbit antiserum by affinity chromatography using epitope-specific immunogen.

Target Details

Target:	NKG2A/C/E (KLRC1/2/3)
Alternative Name:	NKG2-A/C/E (KLRC1/2/3 Products)

Application Details

Application Notes:	<ul style="list-style-type: none">• Applications: FC - Quality tested , Block - Reported in literature• Working Dilutions: Flow Cytometry Purified (UNLB) antibody 1 g/106 cells FITC and BIOT conjugates 1 g/106 cells PE conjugate 0.2 g/106 cells For flow cytometry, the suggested use of these reagents is in a final volume of 100 L
--------------------	---

Sample Volume: 1 mL

Restrictions: For Research Use only

Handling

Concentration: 0.5 mg/mL

Buffer: 0.5 mg in 1.0 mL of PBS/Sodium azide

Preservative: Sodium azide

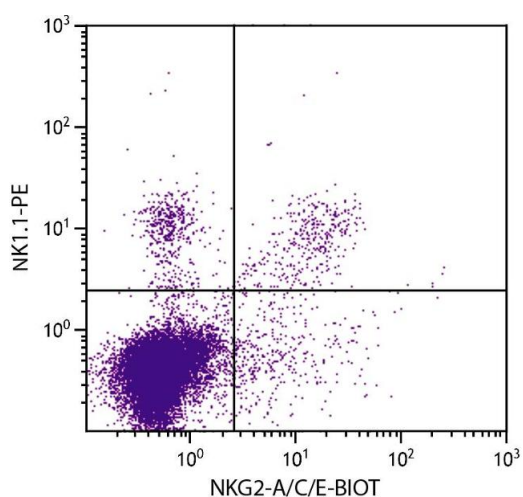
Precaution of Use: This product contains Sodium azide: a POISONOUS AND HAZARDOUS SUBSTANCE which should be handled by trained staff only.

Handling Advice: **Protect conjugated products from light.**
Each reagent is stable for the period shown on the bottle label if stored as directed.

Storage: 4 °C

Storage Comment: Store at 2-8°C

Images



Flow Cytometry

Image 1. C57BL/6 mouse splenocytes were stained with Rat Anti-Mouse NKG2-A/C/E-BIOT and Mouse Anti-Mouse NK1.1-PE.