



Datasheet for ABIN1353399

## FAM102B Protein (AA 1-329) (GST tag)



[Go to Product page](#)

### 1 Image

#### Overview

|                               |   |
|-------------------------------|---|
| Quantity:                     | 10 µg   |
| Target:                       | FAM102B   |
| Protein Characteristics:      | AA 1-329  |
| Origin:                       | Human   |
| Source:                       | Wheat germ  |
| Protein Type:                 | Recombinant   |
| Purification tag / Conjugate: | This FAM102B protein is labelled with GST tag.                                |
| Application:                  | ELISA, Western Blotting (WB), Antibody Array (AA), Affinity Purification (AP) |

#### Product Details

|                  |  |
|------------------|--|
| Purpose:         | FAM102B (Human) Recombinant Protein (P01)  |
| Sequence:        | <p>MRLLDGGST AESSREVVQA NCVRWRKKFS FMCKMSASAA TGILDPCIYR VSVRKELKGG</p> <p>KAYAKLGFAD LNLAEFAGSG NTTRRCLLEG YDTKNTRQDN SILKVLISMQ LMSGDPCFKT</p> <p>PPSTSMSIPI AGESESLQED RKGGETLKVH LGIADLSAKS ASVPDELGAC GHSRTSSYAS</p> <p>QQSKVSGYST CHSRSSSFSE LCHRRNTSVG STSTGVESIL EPCDEIEQKI AEPNLDTADK</p> <p>EDTASEKLSR CPVKQDSVES QLKRVDTRV DADDIVEKIL QSQDFSLDSS AEEGLRLFV</p> <p>GPGGSTTFGS HHLPNRVGSG AYEQVVIKR</p> |
| Characteristics: | Human FAM102B full-length ORF ( NP_001010883.1, 1 a.a. - 329 a.a.) recombinant protein with GST-tag at N-terminal.   |
| Purification:    | in vitro wheat germ expression system  |

## Target Details

|                   |  |
|-------------------|--|
| Target:           | FAM102B  |
| Alternative Name: | FAM102B ( <a href="#">FAM102B Products</a> )   |
| Background:       | Full Gene Name: family with sequence similarity 102, member B<br>Synonyms: DKFZp686N01110,DKFZp779B126 |
| Gene ID:          | 284611   |
| NCBI Accession:   | <a href="#">NM_001010883</a>   |

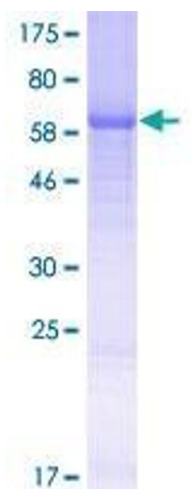
## Application Details

|                    |  |
|--------------------|--|
| Application Notes: | Optimal working dilution should be determined by the investigator.   |
| Comment:           | Preparation method: in vitro, wheat germ expression system<br>Product Quality tested by: 12.5% SDS-PAGE Stained with Coomassie Blue. |
| Restrictions:      | For Research Use only  |

## Handling

|                  |   |
|------------------|---|
| Buffer:          | 50 mM Tris-HCl, 10 mM reduced Glutathione, pH =8.0 in the elution buffer. |
| Handling Advice: | Aliquot to avoid repeated freezing and thawing.                           |
| Storage:         | -80 °C  |
| Storage Comment: | Best use within three months from the date of receipt of this protein.    |

## Images



**Image 1.**