



[Go to Product page](#)

Datasheet for ABIN1353424

FAM115A Protein (AA 1-921) (GST tag)

1 Image

Overview

Quantity:	10 µg
Target:	FAM115A
Protein Characteristics:	AA 1-921
Origin:	Human
Source:	Wheat germ
Protein Type:	Recombinant
Purification tag / Conjugate:	This FAM115A protein is labelled with GST tag.
Application:	ELISA, Western Blotting (WB), Antibody Array (AA), Affinity Purification (AP)

Product Details

Purpose:	FAM115A (Human) Recombinant Protein (P01)
Sequence:	<p>MATPSAAFEA LMNGVTSWDV PEDAVPCELL LIGEASFPVM VNDMGQVLIA ASSYGRGRLV</p> <p>VVSHEDYLVE AQLTPFLNA VGWLCSSPGA PIGVHPSLAP LAKILEGSGV DAKVEPEVKD</p> <p>SLGVYCIDAY NETMTEKLVK FMKCGGGLLI GGQAWDWANQ GEDERVLFTF PGNLVTSVAG</p> <p>IYFTDNKGDT SFFKVSKKMP KIPVLVSCED DLSDDREELL HGISELDISN SDCFPSQLLV</p> <p>HGALAFPLGL DSYHGCVIAA ARYGRGRVVV TGHKVLFTVG KLGPFLLNAV RWLDGGRRGK</p> <p>IVVQTELRTL SGLLAVGGID TSIEPNLTS ASVYCFEPVS EVGVKELQEF VAEGGGLFVG</p> <p>AQAWWWAFKN PGVSPLARFP GNLLLNPFGL SITSQSLNPG PFRTPKAGIR TYHFRSTLAE</p> <p>FQVIMGRKRG NVEKGWLAKL GPDGAAFLQI PAEEIPAYMS VHRLLRKLLS RYRLPVATRE</p> <p>NPVINDCCRG AMLSLATGLA HSGSDLSLLV PEIEDMYSSP YLRPSESPIT VEVNCTNPGT</p> <p>RYCWMSTGLY IPGRQIIIEVS LPEAAASADL KIQIGCHTDD LTRASKLFRG PLVINRCCLD</p> <p>KPTKSITCLW GGLLYIIVPQ NSKLGSPVPT VKGAVHAPYY KLGETTLEEW KRRIQENPGP</p>

Product Details

WGELATDNII LTVPTANLRT LENPEPLLRL WDEVMQAVAR LGAEPFPLRL PQRIVADVQI
SVGWMHAGYP IMCHLESVQE LINEKLIRTK GLWGPVHELG RNQQRQEWEF PPHTEATCN
LWCVYVHETV LGIPRSRANI ALWPPVREKR VRIYLSKGN VKNWNWAWTAL ETYLQLQEAF
GWEPFIRLFT EYRNQTNLPT ENVDKMNLWV KMFSHQVQKN LAPFFEAWAW PIQKEVATSL
AYLPEWKENI MKLYLLTQMP H

Characteristics: Human FAM115A full-length ORF (NP_055534.1, 1 a.a. - 921 a.a.) recombinant protein with GST-tag at N-terminal.

Purification: in vitro wheat germ expression system

Target Details

Target: FAM115A

Alternative Name: FAM115A ([FAM115A Products](#))

Background: Full Gene Name: family with sequence similarity 115, member A
Synonyms: KIAA0738

Gene ID: 9747

NCBI Accession: [NM_014719](#)

Application Details

Application Notes: Optimal working dilution should be determined by the investigator.

Comment: Preparation method: in vitro, wheat germ expression system
Product Quality tested by: 12.5% SDS-PAGE Stained with Coomassie Blue.

Restrictions: For Research Use only

Handling

Buffer: 50 mM Tris-HCl, 10 mM reduced Glutathione, pH =8.0 in the elution buffer.

Handling Advice: Aliquot to avoid repeated freezing and thawing.

Storage: -80 °C

Storage Comment: Best use within three months from the date of receipt of this protein.

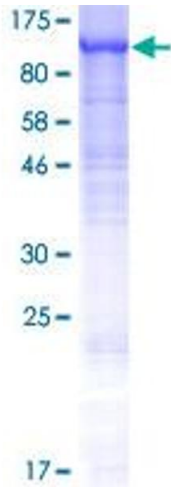


Image 1.