



[Go to Product page](#)

Datasheet for ABIN1353428

DENND6B Protein (AA 1-585) (GST tag)

1 Image

Overview

Quantity:	25 µg
Target:	DENND6B
Protein Characteristics:	AA 1-585
Origin:	Human
Source:	Wheat germ
Protein Type:	Recombinant
Purification tag / Conjugate:	This DENND6B protein is labelled with GST tag.
Application:	ELISA, Western Blotting (WB), Antibody Array (AA), Affinity Purification (AP)

Product Details

Purpose:	FAM116B (Human) Recombinant Protein (P01)
Sequence:	MDALLGTGPR RARGCLGAAG PTSSGRAART PAAPWARFSA WLECVCVWTF DLELGQALEL VYPNDFRLTD KEKSSICYLS FPD SHSGCLG DTQFSFRMRQ CGGQRSPWHA DDRHYN SRAP VALQREPAHY FGYVYFRQVK DSSVKRGYFQ KSLVLVSRLP FVRLFQALLS LIAPEYFDKL APCLEAVCSE IDQWPAPAPG QTLNLPVMGV VVQVRIPSRV DKSESSPPKQ FDQENLLPAP VVLASVHELD LFRFCRPVLT HMQTLWELML LGEPLLVLAP SPDVSSEMVL ALT SCLQPLR FCCDFRPYFT IHDSEFKEFT TRTQAPPNVV LGVTNPFFIK TLQHWPHILR VGEPKMSGDL PKQVKLKKPS RLKTLDTKPG LYTAYTAHLH RDKALLKRL KGVQKKRPSD VQSALLRRHL LELTQSFIIPI LEHYMASLMP LQKSITPWKT PPQIQPFSQD DFLRSLEHAG PQLTCILKGD WLGLYRRFFK SPHFDGWYRQ RHKEMALKLE ALHLEAICEA NIETWMKDKS EVEVDLV LK LREKLVRAQG HQLPVKEATL QRAQLYIETV IGSLPKDLQA VLCPP
Characteristics:	Human FAM116B full-length ORF (AAH31069.1, 1 a.a. - 585 a.a.) recombinant protein with

Product Details

GST-tag at N-terminal.

Purification: in vitro wheat germ expression system

Target Details

Target: DENND6B

Alternative Name: FAM116B ([DENND6B Products](#))

Background: Full Gene Name: family with sequence similarity 116, member B
Synonyms: MGC33692

Gene ID: 414918

Application Details

Application Notes: Optimal working dilution should be determined by the investigator.

Comment: Preparation method: in vitro, wheat germ expression system
Product Quality tested by: 12.5% SDS-PAGE Stained with Coomassie Blue.

Restrictions: For Research Use only

Handling

Buffer: 50 mM Tris-HCl, 10 mM reduced Glutathione, pH =8.0 in the elution buffer.

Handling Advice: Aliquot to avoid repeated freezing and thawing.

Storage: -80 °C

Storage Comment: Best use within three months from the date of receipt of this protein.

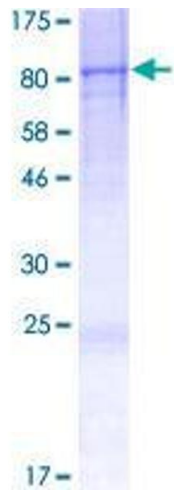


Image 1.