



Datasheet for ABIN1353434

FAM120B Protein (AA 1-910) (GST tag)



[Go to Product page](#)

1 Image

Overview

Quantity:	10 µg
Target:	FAM120B
Protein Characteristics:	AA 1-910
Origin:	Human
Source:	Wheat germ
Protein Type:	Recombinant
Purification tag / Conjugate:	This FAM120B protein is labelled with GST tag.
Application:	ELISA, Western Blotting (WB), Antibody Array (AA), Affinity Purification (AP)

Product Details

Purpose:	FAM120B (Human) Recombinant Protein (P01)
Sequence:	<p>MGVRLQGFV GSTCPHICTV VNFKELAEHH RSKYPGCTPT IVVDAMCCLR YWYTPESWIC</p> <p>GGQWREYFSA LRDFVKTFTA AGIKLIFFFD GMVEQDKRDE WVKRRLKNNR EISRIFHYIK</p> <p>SHKEQPGRNM FFIPSGLAVF TRFALKTLGQ ETLC SLQEAD YE VASYGLQH NCLGILGEDT</p> <p>DYLIYDTCPY FSISELCLES LDTVMLCREK LCESLGLCVA DLPLLACLLG NDIPEGMFE</p> <p>SFRYKCLSSY TSVKENFDKK GNIILAVSDH ISKVLVLYQG EKKLEEILPL GPNKALFYKG</p> <p>MASYLLPGQK SPWFFQKPKG VITLDKQVIS TSSDAESREE VPMCSDAESR QEVPMCTGPE</p> <p>SRREVPVYTD SEPRQEVPMC SDPEPRQEV TCTGPESRRE VPMCSDEPR QEVPMCTGPE</p> <p>ARQEVPMYTD SEPRQEVPMY TDSEPRQEV MYTGSEPRQE VPMYTGPE SR QEVPMYTGPE</p> <p>SRQEVLIRTD PESRQEIMCT GHESKQEVPI CTDPISKQED SMCTHAEINQ KLPVATDFEF</p> <p>KLEALMCTNP EIKQEDPTNV GPEVKQQVTM VSDTEILKVA RTHHVQAESY LVYNIMSSGE</p> <p>IECSNTLEDE LDQALPSQAF IYRPIRQRVY SLLLEDQDV TSTCLAVKEW FVYPGNPLRH</p>

Product Details

PDLVRPLQMT IPGGTPSLKI LWLNQEPEIQ VRRLDTLLAC FNLSSSREEL QAVESPFQAL
CCLLIYLFVQ VDTLCLEDLH AFIAQALCLQ GKSTSQLVNL QPDYINPRAV QLGSLLRGL
TTLVLVNSAC GFPWKTSDFM PWNVFDGKLF HQKYLQSEKG YAVEVLLEQN RSRLTKFHNL
KAVVCKACMK ENRRITGRAH WGS HHAGRWG RQGSSYHRTG SGYSRSSQGQ PWRDQGPGR
QYEHDQWRRY

Characteristics: Human FAM120B full-length ORF (NP_115824.1, 1 a.a. - 910 a.a.) recombinant protein with GST-tag at N-terminal.

Purification: in vitro wheat germ expression system

Target Details

Target: FAM120B

Alternative Name: FAM120B ([FAM120B Products](#))

Background: Full Gene Name: family with sequence similarity 120B
Synonyms: CCPG,FLJ55614,KIAA0183,KIAA1838,PGCC1,dJ894D12.1

Gene ID: 84498

NCBI Accession: [NM_032448](#)

Application Details

Application Notes: Optimal working dilution should be determined by the investigator.

Comment: Preparation method: in vitro, wheat germ expression system
Product Quality tested by: 12.5% SDS-PAGE Stained with Coomassie Blue.

Restrictions: For Research Use only

Handling

Buffer: 50 mM Tris-HCl, 10 mM reduced Glutathione, pH =8.0 in the elution buffer.

Handling Advice: Aliquot to avoid repeated freezing and thawing.

Storage: -80 °C

Storage Comment: Best use within three months from the date of receipt of this protein.

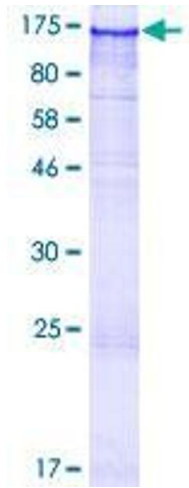


Image 1.