



[Go to Product page](#)

Datasheet for ABIN1353440

FAM124A Protein (AA 1-288) (GST tag)

1 Image

Overview

Quantity:	10 µg
Target:	FAM124A
Protein Characteristics:	AA 1-288
Origin:	Human
Source:	Wheat germ
Protein Type:	Recombinant
Purification tag / Conjugate:	This FAM124A protein is labelled with GST tag.
Application:	ELISA, Western Blotting (WB), Antibody Array (AA), Affinity Purification (AP)

Product Details

Purpose:	FAM124A (Human) Recombinant Protein (P01)
Sequence:	MDPKAGGGGE EDDCVDSGAE TGGSDYSHLS STSELSVEE AQDPFLVSIH IIADPGESQP LQE AidNVLA WIHPDLPLFR VSERRASRRR RKPPKGAQPA LAVVLFQEE YGEEQILQLH RTLQPPWRH HHTEQVHGRF LPYLPCSQDF FTLAPGTPLW AIRPVHYGKE IVRFTVYCRY DNYADSLRFY QLILRRSPSQ KKADFCIFPI FSNLDVDIQF SLKRLPCDQC PVPTDSSVLE FRVRDIGELV PLLPNPCSPI SEGRWQTEDH DGNKILLQVL GGRLSLSV
Characteristics:	Human FAM124A full-length ORF (AAH34497.1, 1 a.a. - 288 a.a.) recombinant protein with GST-tag at N-terminal.
Purification:	in vitro wheat germ expression system

Target Details

Target:	FAM124A
Alternative Name:	FAM124A (FAM124A Products)
Background:	Full Gene Name: family with sequence similarity 124A Synonyms: FLJ30707
Gene ID:	220108

Application Details

Application Notes:	Optimal working dilution should be determined by the investigator.
Comment:	Preparation method: in vitro, wheat germ expression system Product Quality tested by: 12.5% SDS-PAGE Stained with Coomassie Blue.
Restrictions:	For Research Use only

Handling

Buffer:	50 mM Tris-HCl, 10 mM reduced Glutathione, pH =8.0 in the elution buffer.
Handling Advice:	Aliquot to avoid repeated freezing and thawing.
Storage:	-80 °C
Storage Comment:	Best use within three months from the date of receipt of this protein.

Images

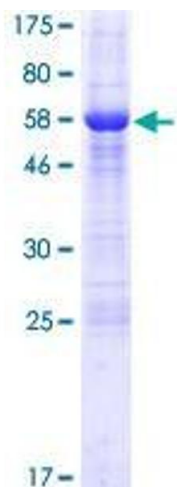


Image 1.