



[Go to Product page](#)

Datasheet for ABIN1353445

FAM126A Protein (AA 1-521) (GST tag)

1 Image

Overview

Quantity:	25 µg
Target:	FAM126A
Protein Characteristics:	AA 1-521
Origin:	Human
Source:	Wheat germ
Protein Type:	Recombinant
Purification tag / Conjugate:	This FAM126A protein is labelled with GST tag.
Application:	ELISA, Western Blotting (WB), Antibody Array (AA), Affinity Purification (AP)

Product Details

Purpose:	FAM126A (Human) Recombinant Protein (P01)
Sequence:	MFTSEKGVVE EWLSEFKTLP ETSLPNYATN LKDKSSLVSS LYKVIQEPQS ELLEPVCHQL FEFYRSGEEQ LLQFTLQFLP ELIWCYLAVS ASRNVHSSGC IEALLLGVYN LEIVDKQGHT KVLSFTIPSL SKPSVYHEPS SIGSMALTES ALSQHGLSKV VYSGPHPQRE MLTAQNRFEV LTFLLLCYNA ALTYMPSVSL QSLCQICSRI CVCGYPRQHV RKYKGISSRI PVSSGFMVQM LTGIYFAFYN GEWDLAQKAL DDIYRAQLE LYPEPLLVAN AIKASLPHGP MKSNKEGTRC IQVEITPTSS RISRNAVTSM SIRGHRWKRH GNTELTGQEE LMEISEVDEG FYSRAASSTS QSGLSNSSHN CSNKPSIGKN HRRSGGSKTG GKEKETTGES CKDHFARKQT QRAQSENLEL LSLKRLTLTT SQSLPKPSSH GLAKTAATVF SKSFEQVSGV TVPHNPSSAV GCGAGTDANR FSACSLQEEK LIYVSERTEL PMKHQSGQQR PPSISITLST D
Characteristics:	Human FAM126A full-length ORF (NP_115970.2, 1 a.a. - 521 a.a.) recombinant protein with GST-tag at N-terminal.

Product Details

Purification: in vitro wheat germ expression system

Target Details

Target: FAM126A

Alternative Name: FAM126A ([FAM126A Products](#))

Background: Full Gene Name: family with sequence similarity 126, member A
Synonyms: DRCTNNB1A,HCC,HLD5,HYCC1

Gene ID: 84668

NCBI Accession: [NM_032581](#)

Application Details

Application Notes: Optimal working dilution should be determined by the investigator.

Comment: Preparation method: in vitro, wheat germ expression system
Product Quality tested by: 12.5% SDS-PAGE Stained with Coomassie Blue.

Restrictions: For Research Use only

Handling

Buffer: 50 mM Tris-HCl, 10 mM reduced Glutathione, pH =8.0 in the elution buffer.

Handling Advice: Aliquot to avoid repeated freezing and thawing.

Storage: -80 °C

Storage Comment: Best use within three months from the date of receipt of this protein.

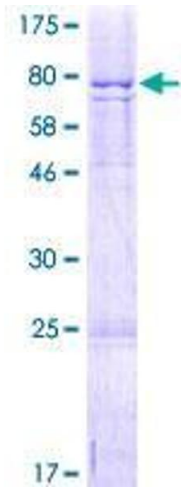


Image 1.