



[Go to Product page](#)

Datasheet for ABIN1353453

Niban Protein (AA 1-928) (GST tag)

1 Image

Overview

Quantity:	10 µg
Target:	Niban (FAM129A)
Protein Characteristics:	AA 1-928
Origin:	Human
Source:	Wheat germ
Protein Type:	Recombinant
Purification tag / Conjugate:	This Niban protein is labelled with GST tag.
Application:	ELISA, Western Blotting (WB), Antibody Array (AA), Affinity Purification (AP)

Product Details

Purpose:	FAM129A (Human) Recombinant Protein (P01)
Sequence:	MGGSASSQLD EGKCAIYRGK TEAAIKNFSP YYSRQYSVAF CNHVRTEVEQ QRDLTSQLK TKPPLAPGTI LYEAELSQFS EDIKKWKERY VVKNDYAVE SYENKEAYQR GAAPKCRILP AGGKVLTSER EYNLLSDRHF PDPLASSEKE NTQPFVVLPK EFPVYLWQPF FRHGYFCFHE AADQKRFSAL LSDCVRHLNH DYMKQMTFEA QAFLEAVQFF RQEKGHYGSW EMITGDEIQI LSNLVMEELL PTLQTDLLPK MKGKKNDRKR TWLGLLEEAY TLVQHGVSEGL LSALKEECRA LTKGLEGTIR SDMDQIVNSK NYLIGKIKAM VAQPAEKSCL ESVQPFLASI LEELMGPVSS GFSEVRVLF KEVNEVSQNF QTTKDSVQLK EHLDRMLNLP LHSVMEPCY TKVNULLHERL QDLKSRFRFP HIDLVVQRTQ NYMQELMENA VFTFEQLLSP HLQGEASKTA VAIEKVKLRV LKQYDYDSST IRKKIFQEAL VQITLPTVQK ALASTCKPEL QKYEQFIFAD HTNMIHVENV YEEILHQILL DETLKVIEA AILKKNLFE DNMLPSESV SSLTDLKPPT GSNQASPARR ASAILPGVLG SETLSNEVFQ ESEEEKQPEV PSSSLAKGESL SLPGPSPPPD GTEQVIISRV

Product Details

DDPVVNPVAT EDTAGLPGTC SSELEFGGTL EDEEPAQEER EPITASGSLK ALRKLLTASV
EVPVDSAPVM EEDTNGESHV PQENEEEEEEK EPSQAAAIHP DNCEESEVSE REAQPPCPEA
HGEELGGFPE VGSPASPPAS GGLTEEPLGP MEGELPGEAC TLTAHEGRGG KCTEEGDASQ
QEGCTLGSDP ICLSESQVSE EQEEMGGQSS AAQATASVNA EEIKVARIHE CQWVVEDAPN
PDVLLSHKDD VKEGEGGQES FPELPSEE

Characteristics: Human FAM129A full-length ORF (NP_443198.1, 1 a.a. - 928 a.a.) recombinant protein with GST-tag at N-terminal.

Purification: in vitro wheat germ expression system

Target Details

Target: Niban (FAM129A)

Alternative Name: FAM129A ([FAM129A Products](#))

Background: Full Gene Name: family with sequence similarity 129, member A
Synonyms: C1orf24,FLJ38228,GIG39,NIBAN

Gene ID: 116496

NCBI Accession: [NM_052966](#)

Application Details

Application Notes: Optimal working dilution should be determined by the investigator.

Comment: Preparation method: in vitro, wheat germ expression system
Product Quality tested by: 12.5% SDS-PAGE Stained with Coomassie Blue.

Restrictions: For Research Use only

Handling

Buffer: 50 mM Tris-HCl, 10 mM reduced Glutathione, pH =8.0 in the elution buffer.

Handling Advice: Aliquot to avoid repeated freezing and thawing.

Storage: -80 °C

Storage Comment: Best use within three months from the date of receipt of this protein.

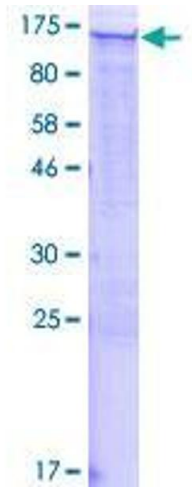


Image 1.