



[Go to Product page](#)

Datasheet for ABIN1353457

Epididymal Protein 3A (EDDM3A) (AA 1-147) protein (GST tag)

1 Image

Overview

Quantity:	10 µg
Target:	Epididymal Protein 3A (EDDM3A)
Protein Characteristics:	AA 1-147
Origin:	Human
Source:	Wheat germ
Protein Type:	Recombinant
Purification tag / Conjugate:	GST tag
Application:	ELISA, Western Blotting (WB), Antibody Array (AA), Affinity Purification (AP)

Product Details

Purpose:	FAM12A (Human) Recombinant Protein (P01)
Sequence:	MTSSLKIWGI LLALLCILCR LCVYSNNIYW REFIKLHYLS PSREFKEYKC DVL MREKEAL KGKSFHMIY SLWFKIQRAC INEKGSDRYR NAYVWAPGAL KVLECHWEKY NNRYTESRSF SYIEFHCGVD GYVDNIEDLR IIEPISN
Characteristics:	Human FAM12A full-length ORF (NP_006674.2, 1 a.a. - 147 a.a.) recombinant protein with GST-tag at N-terminal.
Purification:	in vitro wheat germ expression system

Target Details

Target:	Epididymal Protein 3A (EDDM3A)
Alternative Name:	FAM12A (EDDM3A Products)

Target Details

Background:	Full Gene Name: family with sequence similarity 12, member A Synonyms: EP3A,HE3-ALPHA,HE3A,HE3ALPHA,MGC119614,MGC119615
Gene ID:	10876
NCBI Accession:	NM_006683

Application Details

Application Notes:	Optimal working dilution should be determined by the investigator.
Comment:	Preparation method: in vitro, wheat germ expression system Product Quality tested by: 12.5% SDS-PAGE Stained with Coomassie Blue.
Restrictions:	For Research Use only

Handling

Buffer:	50 mM Tris-HCl, 10 mM reduced Glutathione, pH =8.0 in the elution buffer.
Handling Advice:	Aliquot to avoid repeated freezing and thawing.
Storage:	-80 °C
Storage Comment:	Best use within three months from the date of receipt of this protein.

Images

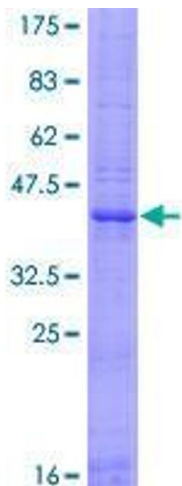


Image 1.