



[Go to Product page](#)

Datasheet for ABIN1353459

FAM131B Protein (AA 1-332) (GST tag)

1 Image

Overview

Quantity:	10 µg
Target:	FAM131B
Protein Characteristics:	AA 1-332
Origin:	Human
Source:	Wheat germ
Protein Type:	Recombinant
Purification tag / Conjugate:	This FAM131B protein is labelled with GST tag.
Application:	ELISA, Western Blotting (WB), Antibody Array (AA), Affinity Purification (AP)

Product Details

Purpose:	FAM131B (Human) Recombinant Protein (P01)
Sequence:	MDSTSSLHGS SLHRPSTEQT RTDFSWDGIN LSMEDTTSIL PKLKRNSNAY GIGALAKSSF SGISRSMKDH VTKPTAMGQG RVAHMIEWQG WGKTPAVQPQ HSHESVRRDT DAYSDLSDGE KEARFLAGVM EQFAISEATL MAWSSMDGED MSVNSTQEPL GCNYSYDNYQE LMDSQDALAQ APMDGWPHSY VSQGMVCLGS SDAWEASDQS LIASPATGSY LGPAFDDSQP SLHEMGPSQP ASGYSALEPP PLLGGDTDWA PGVGAVDLAR GPAEEEEKRPL APEEGEDAGC QDLESLSPRE DPEMSTTLR KVSDVTSSGV QSFDEEEGEA NN
Characteristics:	Human FAM131B full-length ORF (NP_001026860.1, 1 a.a. - 332 a.a.) recombinant protein with GST-tag at N-terminal.
Purification:	in vitro wheat germ expression system

Target Details

Target:	FAM131B
Alternative Name:	FAM131B (FAM131B Products)
Background:	Gene: family with sequence similarity 131, member B Synonyms: KIAA0773
Gene ID:	9715
NCBI Accession:	NM_001031690

Application Details

Application Notes:	Optimal working dilution should be determined by the investigator.
Restrictions:	For Research Use only

Handling

Buffer:	50 mM Tris-HCl, 10 mM reduced Glutathione, pH =8.0 in the elution buffer.
Handling Advice:	Aliquot to avoid repeated freezing and thawing.
Storage:	-80 °C
Storage Comment:	Best use within three months from the date of receipt of this protein.

Images

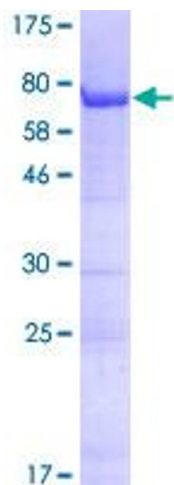


Image 1.