



[Go to Product page](#)

Datasheet for ABIN1353464

FAM13A Protein (AA 1-202) (GST tag)

1 Image

Overview

Quantity:	25 µg
Target:	FAM13A
Protein Characteristics:	AA 1-202
Origin:	Human
Source:	Wheat germ
Protein Type:	Recombinant
Purification tag / Conjugate:	This FAM13A protein is labelled with GST tag.
Application:	ELISA, Western Blotting (WB), Antibody Array (AA), Affinity Purification (AP)

Product Details

Purpose:	FAM13A1 (Human) Recombinant Protein (P01)
Sequence:	MGAGALAICQ SKAAVRLKED MKKIVAVPLN EQKDFTYQKL FGVSLQELER QGLTENGIPA VWWNIVEYLT QHGLTQEGFLF RVNGNVKVVVE QLRLKFESGV PVELGKGDGV CSAASLLKLF LRELPSLIT SALQPRFIQL FQDGRNDVQE SSLRDLIKEL PDTHYCLLKY LCQFLTKVAK HHVQNRMNHVH NLATVFGPNC FQ
Characteristics:	Human FAM13A1 full-length ORF (AAH63126.1, 1 a.a. - 202 a.a.) recombinant protein with GST-tag at N-terminal.
Purification:	in vitro wheat germ expression system

Target Details

Target:	FAM13A
---------	--------

Target Details

Alternative Name:	FAM13A1 (FAM13A Products)
Background:	Full Gene Name: family with sequence similarity 13, member A1 Synonyms: FLJ34562,MGC105131
Gene ID:	10144

Application Details

Application Notes:	Optimal working dilution should be determined by the investigator.
Comment:	Preparation method: in vitro, wheat germ expression system Product Quality tested by: 12.5% SDS-PAGE Stained with Coomassie Blue.
Restrictions:	For Research Use only

Handling

Buffer:	50 mM Tris-HCl, 10 mM reduced Glutathione, pH =8.0 in the elution buffer.
Handling Advice:	Aliquot to avoid repeated freezing and thawing.
Storage:	-80 °C
Storage Comment:	Best use within three months from the date of receipt of this protein.

Images

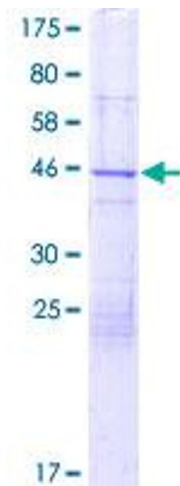


Image 1.