



[Go to Product page](#)

Datasheet for ABIN1353470

## DESI1 Protein (AA 1-168) (GST tag)

### 1 Image

#### Overview

Quantity:	10 µg
Target:	DESI1 (PPPDE2)
Protein Characteristics:	AA 1-168
Origin:	Human
Source:	Wheat germ
Protein Type:	Recombinant
Purification tag / Conjugate:	This DESI1 protein is labelled with GST tag.
Application:	ELISA, Western Blotting (WB), Antibody Array (AA), Affinity Purification (AP)

#### Product Details

Purpose:	D15Wsu75e (Human) Recombinant Protein (P01)
Sequence:	MEPPNLYPVK LYVYDLSKGL ARRLSPIMLG KQLEGIWHTS IVVHKDEFFF GSGGISSCPP GGTLLGPPDS VVDVGSTEVT EEIFLEYLSS LGESLFRGEA YNLFEHNCNT FSNEVAQFLT GRKIPSYITD LPSEVLSTPF GQALRPLLDS IQIQPPGGSS VGRPNGQS
Characteristics:	Human D15Wsu75e full-length ORF ( NP_056519.1, 1 a.a. - 168 a.a.) recombinant protein with GST-tag at N-terminal.
Purification:	in vitro wheat germ expression system

#### Target Details

Target:	DESI1 (PPPDE2)
Alternative Name:	FAM152B ( <a href="#">PPPDE2 Products</a> )

## Target Details

Background:	Full Gene Name: family with sequence similarity 152, member B Synonyms: D15Wsu75e,DJ347H13.4,MGC138384
Gene ID:	27351
NCBI Accession:	<a href="#">NM_015704</a>

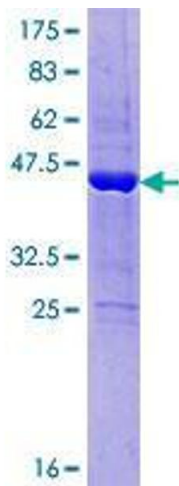
## Application Details

Application Notes:	Optimal working dilution should be determined by the investigator.
Comment:	Preparation method: in vitro, wheat germ expression system Product Quality tested by: 12.5% SDS-PAGE Stained with Coomassie Blue.
Restrictions:	For Research Use only

## Handling

Buffer:	50 mM Tris-HCl, 10 mM reduced Glutathione, pH =8.0 in the elution buffer.
Handling Advice:	Aliquot to avoid repeated freezing and thawing.
Storage:	-80 °C
Storage Comment:	Best use within three months from the date of receipt of this protein.

## Images



**Image 1.**