

Datasheet for ABIN1353473  
**FAM155B Protein (AA 245-341) (GST tag)**



[Go to Product page](#)

1 Image

Overview

Quantity:	10 µg
Target:	FAM155B
Protein Characteristics:	AA 245-341
Origin:	Human
Source:	Wheat germ
Protein Type:	Recombinant
Purification tag / Conjugate:	This FAM155B protein is labelled with GST tag.
Application:	ELISA, Western Blotting (WB), Antibody Array (AA), Affinity Purification (AP)

Product Details

Purpose:	TMEM28 (Human) Recombinant Protein (Q01)
Sequence:	NCIEAYQRLD RHAQEKYDEF DLVLHKYLQA EEYSIRSCTK GCKAVYKAWL CSEYFSVTQQ ECQRWVPCKQ YCLEVQTRCP FILPDNEEMV YGGLPGF
Characteristics:	Human TMEM28 partial ORF ( NP_056501, 245 a.a. - 341 a.a.) recombinant protein with GST-tag at N-terminal.
Purification:	in vitro wheat germ expression system

Target Details

Target:	FAM155B
Alternative Name:	FAM155B ( <a href="#">FAM155B Products</a> )

## Target Details

Background:	Full Gene Name: family with sequence similarity 155, member B Synonyms: CXorf63,TED,TMEM28,bB57D9.1
Gene ID:	27112
NCBI Accession:	<a href="#">NM_015686</a>

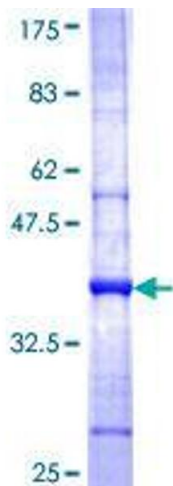
## Application Details

Application Notes:	Optimal working dilution should be determined by the investigator.
Comment:	Preparation method: in vitro, wheat germ expression system Product Quality tested by: 12.5% SDS-PAGE Stained with Coomassie Blue.
Restrictions:	For Research Use only

## Handling

Buffer:	50 mM Tris-HCl, 10 mM reduced Glutathione, pH =8.0 in the elution buffer.
Handling Advice:	Aliquot to avoid repeated freezing and thawing.
Storage:	-80 °C
Storage Comment:	Best use within three months from the date of receipt of this protein.

## Images



**Image 1.**