

Datasheet for ABIN1353475  
**EMC9 Protein (AA 1-208) (GST tag)**



[Go to Product page](#)

1 Image

## Overview

Quantity:	10 µg
Target:	EMC9
Protein Characteristics:	AA 1-208
Origin:	Human
Source:	Wheat germ
Protein Type:	Recombinant
Purification tag / Conjugate:	This EMC9 protein is labelled with GST tag.
Application:	ELISA, Western Blotting (WB), Antibody Array (AA), Affinity Purification (AP)

## Product Details

Purpose:	C14orf122 (Human) Recombinant Protein (P01)
Sequence:	MGEVEISALA YVKMCLHAAR YPHAAVNGLF LAPAPRSGEC LCLTDCVPLF HSHLALSVML EVALNQVDVW GAQAGLVVAG YYHANAAVND QSPGPLALKI AGRIAEFFPD AVLIMLDNQK LVPQPRVPPV IVLENQGLRW VPKDKNLVMW RDWEESRQMV GALLEDRAHQ HLVDVDFCHLD DIRQDWTNQR LNTQITQWVG PTNGNGNA
Characteristics:	Human C14orf122 full-length ORF ( NP_057133.2, 1 a.a. - 208 a.a.) recombinant protein with GST-tag at N-terminal.
Purification:	in vitro wheat germ expression system

## Target Details

Target:	EMC9
---------	------

## Target Details

Alternative Name:	FAM158A (EMC9 Products)
Background:	Full Gene Name: family with sequence similarity 158, member A Synonyms: C14orf122,CGI-112
Gene ID:	51016
NCBI Accession:	NM_016049

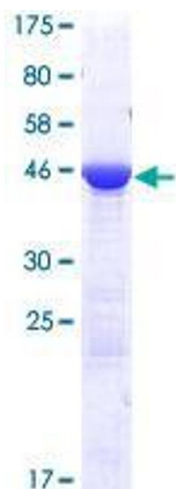
## Application Details

Application Notes:	Optimal working dilution should be determined by the investigator.
Comment:	Preparation method: in vitro, wheat germ expression system Product Quality tested by: 12.5% SDS-PAGE Stained with Coomassie Blue.
Restrictions:	For Research Use only

## Handling

Buffer:	50 mM Tris-HCl, 10 mM reduced Glutathione, pH =8.0 in the elution buffer.
Handling Advice:	Aliquot to avoid repeated freezing and thawing.
Storage:	-80 °C
Storage Comment:	Best use within three months from the date of receipt of this protein.

## Images



**Image 1.**