

Datasheet for ABIN1353490

FAM173B Protein (AA 1-233) (GST tag)[Go to Product page](#)**1** Image

Overview

Quantity:	10 µg
Target:	FAM173B
Protein Characteristics:	AA 1-233
Origin:	Human
Source:	Wheat germ
Protein Type:	Recombinant
Purification tag / Conjugate:	This FAM173B protein is labelled with GST tag.
Application:	ELISA, Western Blotting (WB), Antibody Array (AA), Affinity Purification (AP)

Product Details

Purpose:	LOC134145 (Human) Recombinant Protein (P01)
Sequence:	MEGGGGIPLE TLKEESQSRH VLPASFEVNS LQKSNWGFLL TGLVGGTLVA VYAVATPFVT PALRKVCLPF VPATMKQIEN VVKMLRCRRG SLVDIGSGDG RIVIAAAKKG FTAVGYELNP WLVWYSRYRA WREGVHGS AK FYISDLWKVT FSQYSNVVIF GVPQMMLQLE KKLERELEDD ARVIACRFPF PHWTPDHVTG EGIDTVWAYD ASTFRGREKR PCTSMHFQLP IQA
Characteristics:	Human LOC134145 full-length ORF (NP_954584.1, 1 a.a. - 233 a.a.) recombinant protein with GST-tag at N-terminal.
Purification:	in vitro wheat germ expression system

Target Details

Target:	FAM173B
---------	---------

Target Details

Alternative Name:	FAM173B (FAM173B Products)
Background:	Full Gene Name: family with sequence similarity 173, member B Synonyms: FLJ20667
Gene ID:	134145
NCBI Accession:	NM_199133

Application Details

Application Notes:	Optimal working dilution should be determined by the investigator.
Comment:	Preparation method: in vitro, wheat germ expression system Product Quality tested by: 12.5% SDS-PAGE Stained with Coomassie Blue.
Restrictions:	For Research Use only

Handling

Buffer:	50 mM Tris-HCl, 10 mM reduced Glutathione, pH =8.0 in the elution buffer.
Handling Advice:	Aliquot to avoid repeated freezing and thawing.
Storage:	-80 °C
Storage Comment:	Best use within three months from the date of receipt of this protein.

Images

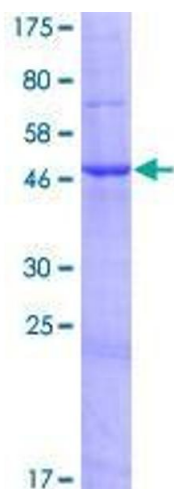


Image 1.