

Datasheet for ABIN1353500
FAM180A Protein (AA 1-173) (GST tag)



[Go to Product page](#)

1 Image

Overview

Quantity:	10 µg
Target:	FAM180A
Protein Characteristics:	AA 1-173
Origin:	Human
Source:	Wheat germ
Protein Type:	Recombinant
Purification tag / Conjugate:	This FAM180A protein is labelled with GST tag.
Application:	ELISA, Western Blotting (WB), Antibody Array (AA), Affinity Purification (AP)

Product Details

Purpose:	UNQ1940 (Human) Recombinant Protein (P01)
Sequence:	MHWKMLLLLL LYYNAEASMC HRWSRAVLFP AAHRPKRSSS LPLNPVLQTS LEEVELLYEF LLAELEISPD LQISIKDEEL ASLRKASDFR TVCNNVIPKS IPDIRRLSAS LSSHPGILKK EDFERTVLTL AYTAYRTALS HGHQKDIWAQ SLVSLFQALR HDLMRSSQPG VPP
Characteristics:	Human UNQ1940 full-length ORF (NP_995327.1, 1 a.a. - 173 a.a.) recombinant protein with GST-tag at N-terminal.
Purification:	in vitro wheat germ expression system

Target Details

Target:	FAM180A
Alternative Name:	FAM180A (FAM180A Products)

Target Details

Background:	Full Gene Name: family with sequence similarity 180, member A Synonyms: UNQ1940
Gene ID:	389558
NCBI Accession:	NM_205855

Application Details

Application Notes:	Optimal working dilution should be determined by the investigator.
Comment:	Preparation method: in vitro, wheat germ expression system Product Quality tested by: 12.5% SDS-PAGE Stained with Coomassie Blue.
Restrictions:	For Research Use only

Handling

Buffer:	50 mM Tris-HCl, 10 mM reduced Glutathione, pH =8.0 in the elution buffer.
Handling Advice:	Aliquot to avoid repeated freezing and thawing.
Storage:	-80 °C
Storage Comment:	Best use within three months from the date of receipt of this protein.

Images

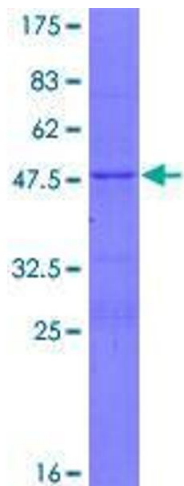


Image 1.