



[Go to Product page](#)

Datasheet for ABIN1353504

## TVP23C/FAM18B2 Protein (AA 1-276) (GST tag)

### 1 Image

#### Overview

Quantity:	10 µg
Target:	TVP23C/FAM18B2 (TVP23C)
Protein Characteristics:	AA 1-276
Origin:	Human
Source:	Wheat germ
Protein Type:	Recombinant
Purification tag / Conjugate:	This TVP23C/FAM18B2 protein is labelled with GST tag.
Application:	ELISA, Western Blotting (WB), Antibody Array (AA), Affinity Purification (AP)

#### Product Details

Purpose:	FAM18B2 (Human) Recombinant Protein (P01)
Sequence:	MLQQDSNDDT EAVSLFDAEE ETTNRPRKAK IRHPVASFFH LFFRVSAIIV CLLCELLSSS FITCMVTIIL LLSCDFWAVK NVTGRLMVGL RWWNHIDEDG KSHWVFESRK ESSQENKTVS EAESRIFWLG LIACSVLWVI FAFSALFSFT VKWLRRSRHI AQTGLKVLGS RDPPASAFQS AGITGVSRCP GHPSSKFHQV DINSFTRITD RALYWKPAPR LSSPPLRAAP GNCQQMAPAR LFLSLRLWAW RGGGESPNSR GTGEPGPKFH LASGMH
Characteristics:	Human FAM18B2 full-length ORF ( NP_660344.1, 1 a.a. - 276 a.a.) recombinant protein with GST-tag at N-terminal.
Purification:	in vitro wheat germ expression system

## Target Details

Target:	TVP23C/FAM18B2 (TVP23C)
Alternative Name:	FAM18B2 ( <a href="#">TVP23C Products</a> )
Background:	Full Gene Name: family with sequence similarity 18, member B2 Synonyms: MGC8763
Gene ID:	201158
NCBI Accession:	<a href="#">NM_145301</a>

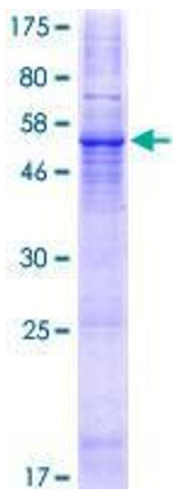
## Application Details

Application Notes:	Optimal working dilution should be determined by the investigator.
Comment:	Preparation method: in vitro, wheat germ expression system Product Quality tested by: 12.5% SDS-PAGE Stained with Coomassie Blue.
Restrictions:	For Research Use only

## Handling

Buffer:	50 mM Tris-HCl, 10 mM reduced Glutathione, pH =8.0 in the elution buffer.
Handling Advice:	Aliquot to avoid repeated freezing and thawing.
Storage:	-80 °C
Storage Comment:	Best use within three months from the date of receipt of this protein.

## Images



**Image 1.**