



[Go to Product page](#)

Datasheet for ABIN1353507

FAM19A4 Protein (AA 1-140) (GST tag)

1 Image

Overview

Quantity:	10 µg
Target:	FAM19A4
Protein Characteristics:	AA 1-140
Origin:	Human
Source:	Wheat germ
Protein Type:	Recombinant
Purification tag / Conjugate:	This FAM19A4 protein is labelled with GST tag.
Application:	Western Blotting (WB), ELISA, Antibody Array (AA), Affinity Purification (AP)

Product Details

Purpose:	FAM19A4 (Human) Recombinant Protein (P01)
Sequence:	MRSPRMRVCA KSVLLSHWLF LAYVLMVCCCK LMSASSQHLR GHAGHHQIKQ GTCEVVAVHR CCNKNRIEER SQTVMKSCFP GQVAGTTRAQ PSCVEASIVI QKWWCHMNPC LEGEDCKVLP DYSGWSCSSG NKVKTTKVTR
Characteristics:	Human FAM19A4 full-length ORF (NP_001005527.1, 1 a.a. - 140 a.a.) recombinant protein with GST-tag at N-terminal.
Purification:	in vitro wheat germ expression system

Target Details

Target:	FAM19A4
Alternative Name:	FAM19A4 (FAM19A4 Products)

Target Details

Background:	Full Gene Name: family with sequence similarity 19 (chemokine (C-C motif)-like), member A4 Synonyms: FLJ25161, TAFA-4, TAFA4
Gene ID:	151647
NCBI Accession:	NM_001005527

Application Details

Application Notes:	Optimal working dilution should be determined by the investigator.
Comment:	Preparation method: in vitro, wheat germ expression system Product Quality tested by: 12.5% SDS-PAGE Stained with Coomassie Blue.
Restrictions:	For Research Use only

Handling

Buffer:	50 mM Tris-HCl, 10 mM reduced Glutathione, pH =8.0 in the elution buffer.
Handling Advice:	Aliquot to avoid repeated freezing and thawing.
Storage:	-80 °C
Storage Comment:	Best use within three months from the date of receipt of this protein.

Images

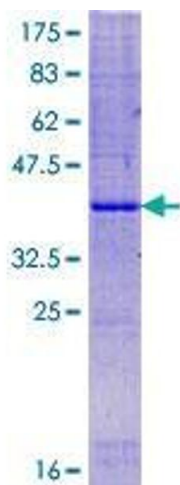


Image 1.