

Datasheet for ABIN135351
anti-KLRG1 antibody (Biotin)[Go to Product page](#)

1 Image

Overview

Quantity:	0.5 mg
Target:	KLRG1
Reactivity:	Mouse
Host:	Hamster
Clonality:	Monoclonal
Conjugate:	This KLRG1 antibody is conjugated to Biotin
Application:	Flow Cytometry (FACS)

Product Details

Immunogen:	IL-2-activated NK cells (A-LAK cells) from B6 (H-2b) mice
Clone:	2F1
Isotype:	IgG
Specificity:	Mouse/Human KLRG1, Mr 30-38 kDa
Characteristics:	Hamster Anti-Mouse KLRG1-BIOT

Target Details

Target:	KLRG1
Alternative Name:	KLRG1 (KLRG1 Products)

Application Details

Application Notes:	<ul style="list-style-type: none">• Applications: FC - Quality tested , IP - Reported in literature , WB-NR - Reported in literature• Working Dilutions: Flow Cytometry Purified (UNLB) antibody 1 g/106 cells FITC and BIOT conjugates 1 g/106 cells PE conjugate 0.2 g/106 cells For flow cytometry, the suggested use of these reagents is in a final volume of 100 L
--------------------	---

Sample Volume:	1 mL
Restrictions:	For Research Use only

Handling

Concentration:	0.5 mg/mL
Buffer:	0.5 mg in 1.0 mL of PBS/Sodium azide
Preservative:	Sodium azide
Precaution of Use:	This product contains Sodium azide: a POISONOUS AND HAZARDOUS SUBSTANCE which should be handled by trained staff only.
Handling Advice:	Protect conjugated products from light. Each reagent is stable for the period shown on the bottle label if stored as directed.
Storage:	4 °C
Storage Comment:	Store at 2-8°C

Images

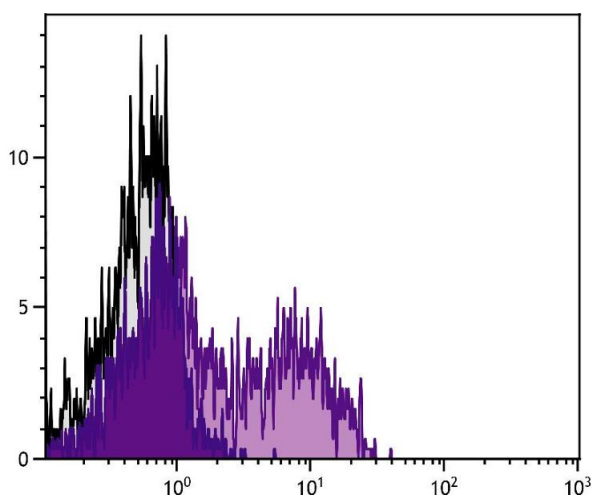


Image 1. NK1.1 positive / CD3 negative C57BL/6 mouse splenocytes were stained with Hamster Anti-Mouse KLRG1-PE.