

Datasheet for ABIN1353523

FAM35A Protein (AA 1-835) (GST tag)



[Go to Product page](#)

1 Image

Overview

Quantity:	10 µg
Target:	FAM35A
Protein Characteristics:	AA 1-835
Origin:	Human
Source:	Wheat germ
Protein Type:	Recombinant
Purification tag / Conjugate:	This FAM35A protein is labelled with GST tag.
Application:	ELISA, Western Blotting (WB), Antibody Array (AA), Affinity Purification (AP)

Product Details

Purpose:	FAM35A (Human) Recombinant Protein (P01)
Sequence:	MSGGSQVHIF WGAPIAPLKI TVSEDTASLM SVADPWKKIQ LLYSQHSLYL KDEKQHKNL NYKVPESIGS PDLSGHFLAN CMNRHVHVKD DFVRSVSETQ NIESQKIHSS RLSGITSSNM QICGFKSTVP HFTEEEKYQK LLENKIRDE QPKHQPDICG KNFNTNLFQL GHKCAAVLDL VCSTEKINIG PEVVQRECV TEYHEIQNQC LGLFSSNAVD KSRSEAAVRK VSDLKISTDT EFLSIITSSQ VAFLAQKKDK RRSPVNGNV NMETPKASY GEIRIPEENS IQLDGFTEAY ESGQNQAYSL ELFSPVCPKT ENSRIHNSD KGLEEHTGSQ ELFSSSEDELP PNEIRIELCS SGILCSQLNT FHKSAIKRSC TSEDKVGQSE ALSRVLQVAK KMKLISNGGD SAVEMDRRNV SEFKSIKTS LIKNCDSKSQ KYNCLVMVLS PCHVKEINIK FGPNSGSKVP LATVTVIDQS ETKKKVFLWR TAAFWAFTVF LGDIILLTDV VIHEDQWIGE TVLQSTFSSQ LLNLGSYSSI QPEEYSSVVS EVVLQDLLAY VSSKHSYLRD LPPRQPQRVN SIDFVELEHL QPDVLVHAVL RVVDFTILTE AVYSYRGQKQ KKVMLTVEQA QDQHYALVLW GPGAAWYPQL QRKKGWVLIK

Product Details

AQISELAFPI TASQKIALNA HSSLKSIFSS LPNIVYTGCA KCGLELETDE NRIYKQCFSC
LPFTMKKIYY RPALMTAIDG RHDVCIRVES KLIEKILLNI SADCLNRVIV PSSEITYGMV
VADLFHSLLA VSAEPCVLKI QSLFVLDENS YPLQQDFSL LDFYDPDIVKHG ANARL

Characteristics: Human FAM35A full-length ORF (AAH51863.1, 1 a.a. - 835 a.a.) recombinant protein with GST-tag at N-terminal.

Purification: in vitro wheat germ expression system

Target Details

Target: FAM35A

Alternative Name: FAM35A ([FAM35A Products](#))

Background: Full Gene Name: family with sequence similarity 35, member A
Synonyms: FAM35A1,MGC5560,bA163M19.1

Gene ID: 54537

Application Details

Application Notes: Optimal working dilution should be determined by the investigator.

Comment: Preparation method: in vitro, wheat germ expression system
Product Quality tested by: 12.5% SDS-PAGE Stained with Coomassie Blue.

Restrictions: For Research Use only

Handling

Buffer: 50 mM Tris-HCl, 10 mM reduced Glutathione, pH =8.0 in the elution buffer.

Handling Advice: Aliquot to avoid repeated freezing and thawing.

Storage: -80 °C

Storage Comment: Best use within three months from the date of receipt of this protein.

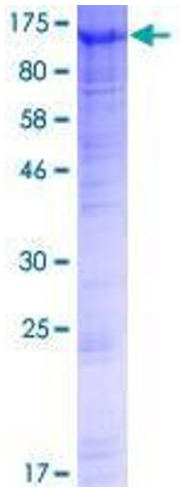


Image 1.