

Datasheet for ABIN1353531
FAM3B Protein (AA 1-235) (GST tag)



[Go to Product page](#)

1 Image

Overview

Quantity:	25 µg
Target:	FAM3B
Protein Characteristics:	AA 1-235
Origin:	Human
Source:	Wheat germ
Protein Type:	Recombinant
Purification tag / Conjugate:	This FAM3B protein is labelled with GST tag.
Application:	Western Blotting (WB), ELISA, Antibody Array (AA), Affinity Purification (AP)

Product Details

Purpose:	FAM3B (Human) Recombinant Protein (P02)
Sequence:	MRPLAGLLK VVFWFASLC AWYSGYLLAE LIPDAPLSSA AYSIRSIGER PVLKAPVPKR QKCDHWTPCP SDTYAYRLLS GGGRSKYAKI CFEDNLLMGE QLGNVARGIN IAIVNYVTGN VTATRCFDMY EGDNSGPMTK FIQSAAPKSL LFMVTYDDGS TRLNNDAKNA IEALGSKEIR NMFKRSSWVF IAAKGLELPS EIQREKINH S DAKNNRYSGW PAEQIEGCI PKERS
Characteristics:	Human FAM3B full-length ORF (NP_478066.3, 1 a.a. - 235 a.a.) recombinant protein with GST-tag at N-terminal.
Purification:	in vitro wheat germ expression system

Target Details

Target:	FAM3B
---------	-------

Target Details

Alternative Name:	FAM3B (FAM3B Products)
Target Type:	Viral Protein
Background:	Full Gene Name: family with sequence similarity 3, member B Synonyms: 2-21,C21orf11,C21orf76,ORF9,PANDER,PRED44
Gene ID:	54097
NCBI Accession:	NM_058186
Pathways:	Hormone Transport

Application Details

Application Notes:	Optimal working dilution should be determined by the investigator.
Comment:	Preparation method: in vitro, wheat germ expression system Product Quality tested by: 12.5% SDS-PAGE Stained with Coomassie Blue.
Restrictions:	For Research Use only

Handling

Buffer:	50 mM Tris-HCl, 10 mM reduced Glutathione, pH =8.0 in the elution buffer.
Handling Advice:	Aliquot to avoid repeated freezing and thawing.
Storage:	-80 °C
Storage Comment:	Best use within three months from the date of receipt of this protein.

Images

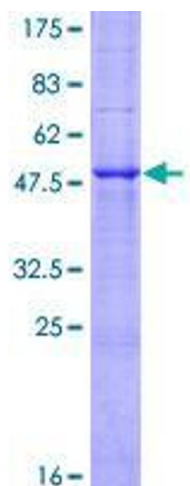


Image 1.